

#1 & #2: Paired Units
 Replace existing wall mount ADA fountain/filler with:

- (1) ADA Height LVRGRN8WSK
- (1) Std. height LVRGRN8WSK
- Reuse 115V service at ADA unit
- Add (1) 115V service, dom. water & sanitary drain to std. height unit
- ADA unit on LH, Std. unit on RH

#3: ADA Unit
 Replace existing wall mount ADA fountain/filler with:

- (1) ADA Height LVRGRN8WSK
- Reuse existing 115V service from existing unit
- Modify millwork, electrical and plumbing service as necessary to support new unit

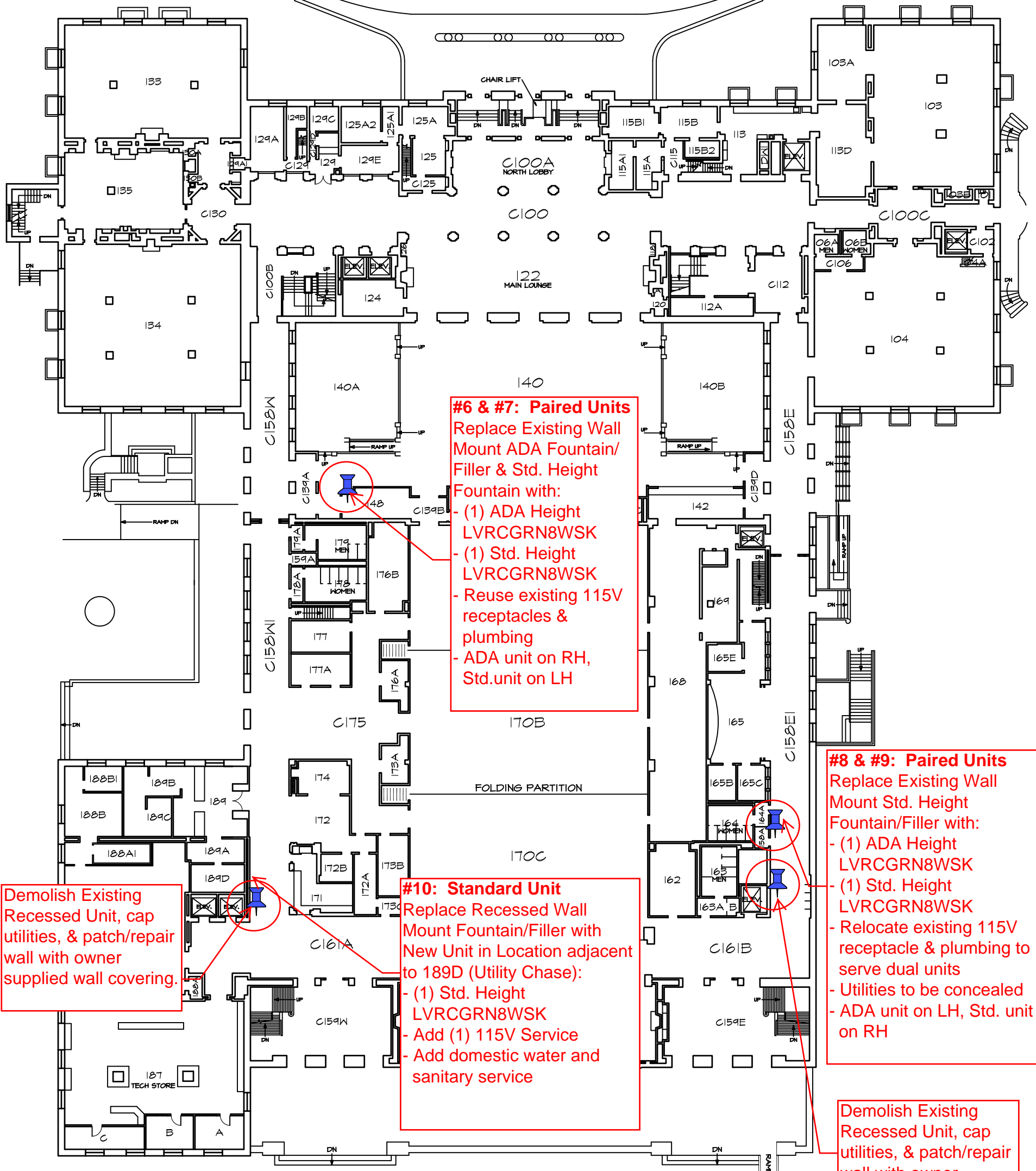
#4: Standard Height
 Replace recessed wall mount fountain/filler with:

- (1) Std. height LVRGRN8WSK
- Add (1) 115V service to std. height unit
- Reuse domestic water and sanitary connections
- Patch/repair wall as necessary

#5: ADA Unit
 Replace recessed wall mount with:

- (1) ADA Height LVRGRN8WSK
- Add (1) 115V service to std. height unit (pull from quad box adjacent to existing fountain)
- Relocate existing dom. water and sanitary connections to ADA H
- Patch/repair wall as necessary

NORTH
BASEMENT PLAN
 0 16 32 48 64 FEET



#6 & #7: Paired Units
 Replace Existing Wall Mount ADA Fountain/ Filler & Std. Height Fountain with:
 - (1) ADA Height LVRGRN8WSK
 - (1) Std. Height LVRGRN8WSK
 - Reuse existing 115V receptacles & plumbing
 - ADA unit on RH, Std. unit on LH

#8 & #9: Paired Units
 Replace Existing Wall Mount Std. Height Fountain/ Filler with:
 - (1) ADA Height LVRGRN8WSK
 - (1) Std. Height LVRGRN8WSK
 - Relocate existing 115V receptacle & plumbing to serve dual units
 - Utilities to be concealed
 - ADA unit on LH, Std. unit on RH

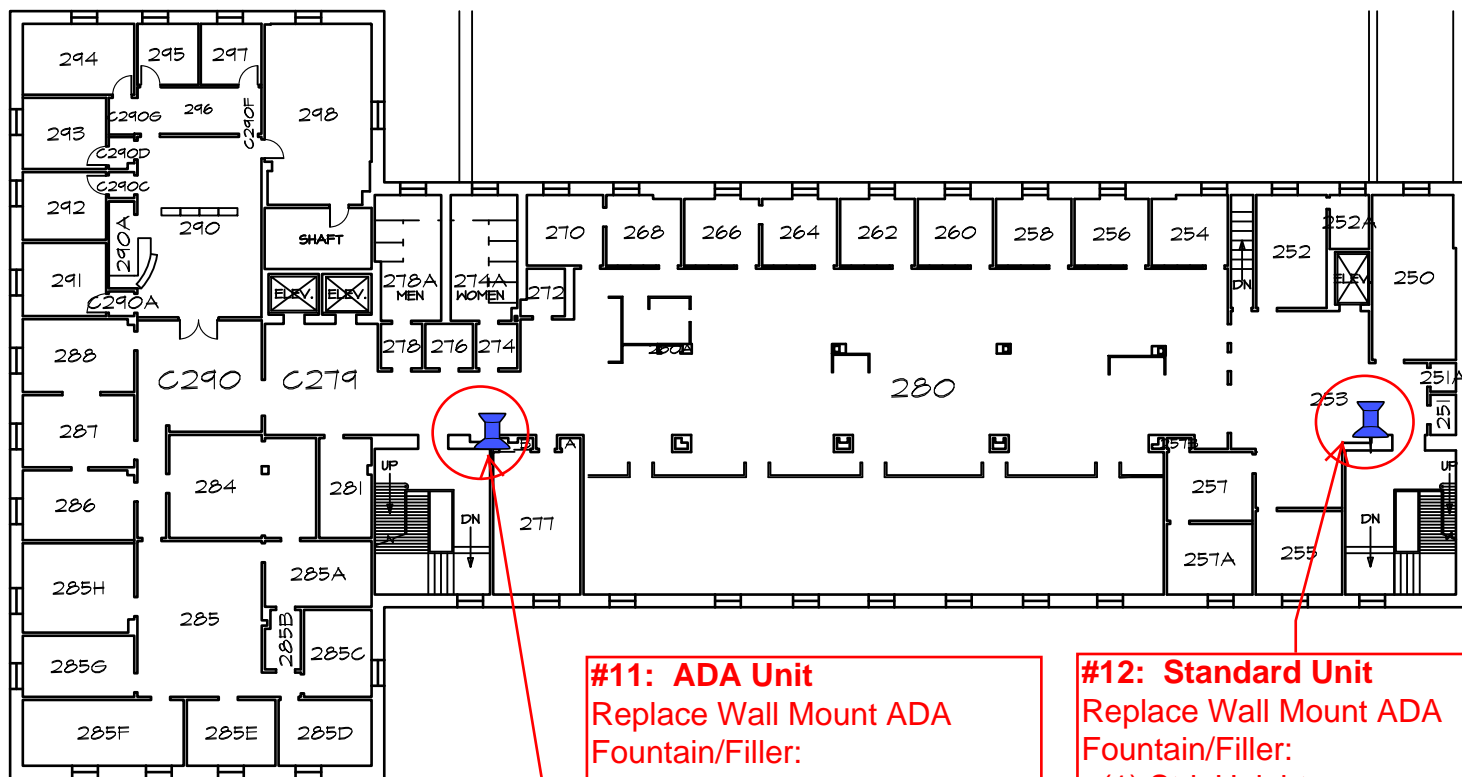
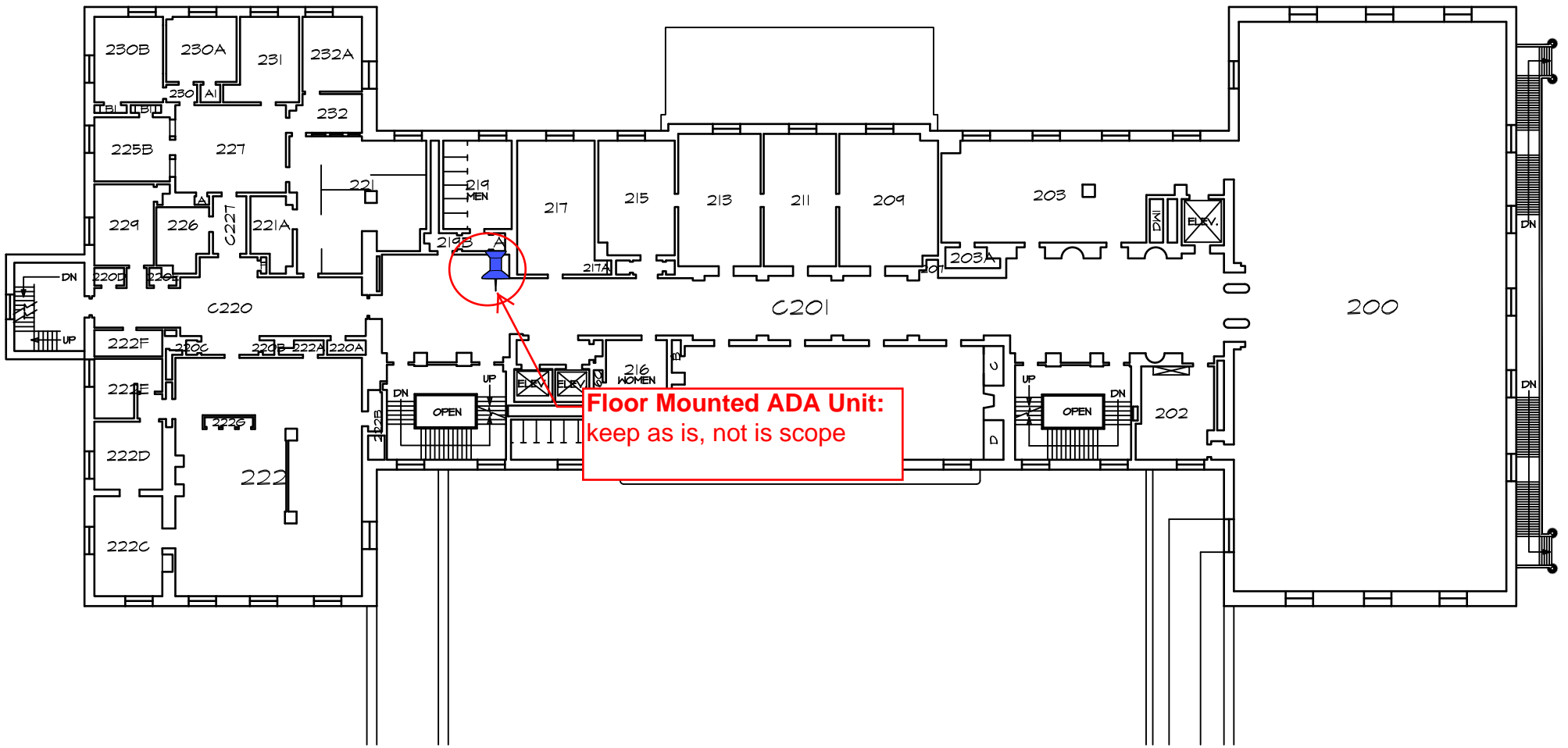
#10: Standard Unit
 Replace Recessed Wall Mount Fountain/ Filler with New Unit in Location adjacent to 189D (Utility Chase):
 - (1) Std. Height LVRGRN8WSK
 - Add (1) 115V Service
 - Add domestic water and sanitary service

Demolish Existing Recessed Unit, cap utilities, & patch/repair wall with owner supplied wall covering.

Demolish Existing Recessed Unit, cap utilities, & patch/repair wall with owner supplied wall covering.



FIRST FLOOR PLAN

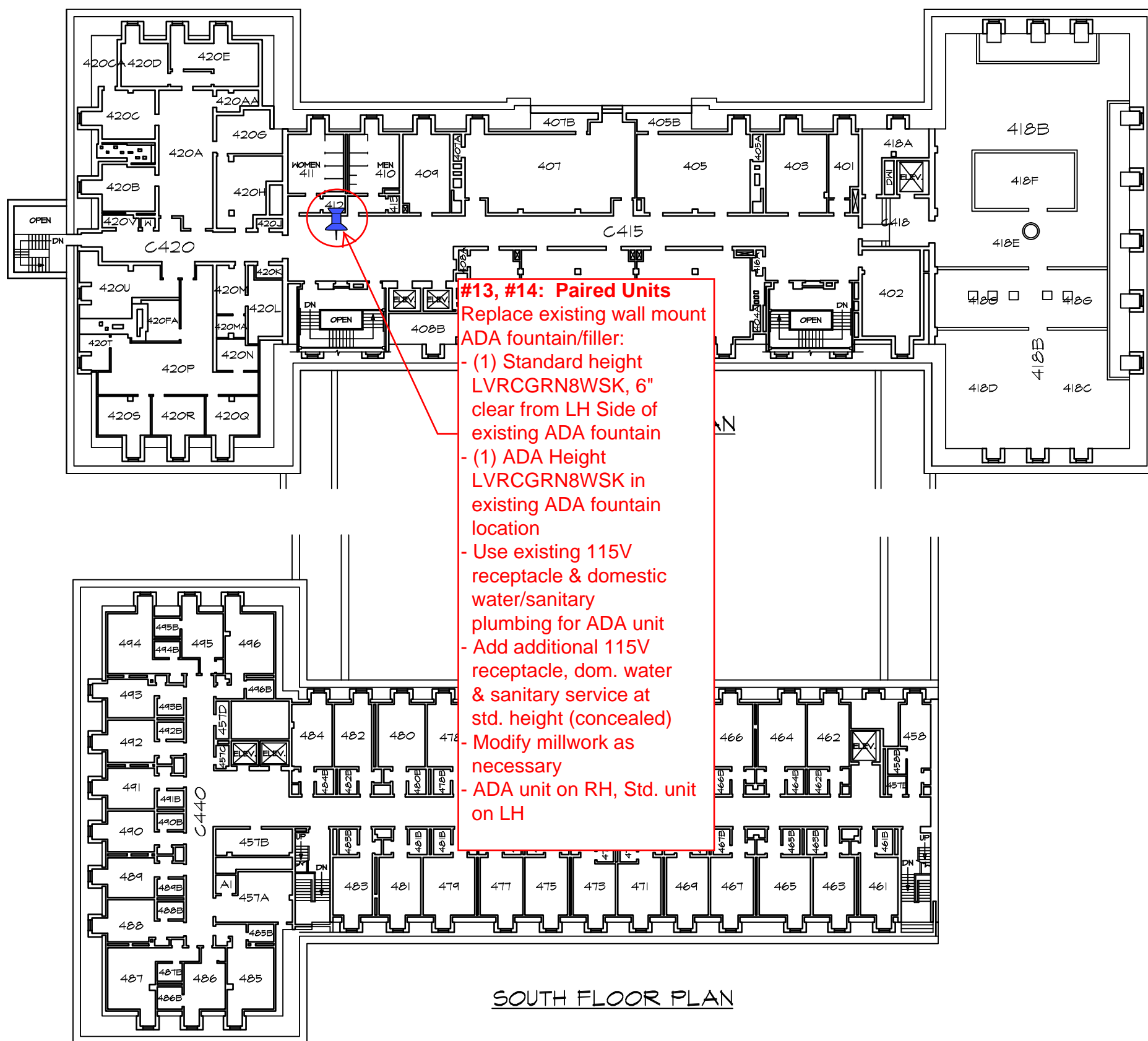


#11: ADA Unit
 Replace Wall Mount ADA Fountain/Filler:
 - (1) ADA Height LVRGRN8WSK
 - Reuse existing 115V service, domestic water and sanitary service
 - Modify millwork as necessary

#12: Standard Unit
 Replace Wall Mount ADA Fountain/Filler:
 - (1) Std. Height LVRGRN8WSK
 - Relocate 115V service, domestic water and sanitary service to standard height (concealed)
 - Modify millwork as necessary



SECOND FLOOR PLAN



#13, #14: Paired Units
 Replace existing wall mount ADA fountain/filler:
 - (1) Standard height LVR CGRN8WSK, 6" clear from LH Side of existing ADA fountain
 - (1) ADA Height LVR CGRN8WSK in existing ADA fountain location
 - Use existing 115V receptacle & domestic water/sanitary plumbing for ADA unit
 - Add additional 115V receptacle, dom. water & sanitary service at std. height (concealed)
 - Modify millwork as necessary
 - ADA unit on RH, Std. unit on LH

SOUTH FLOOR PLAN



FOURTH FLOOR PLAN