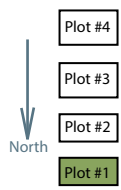
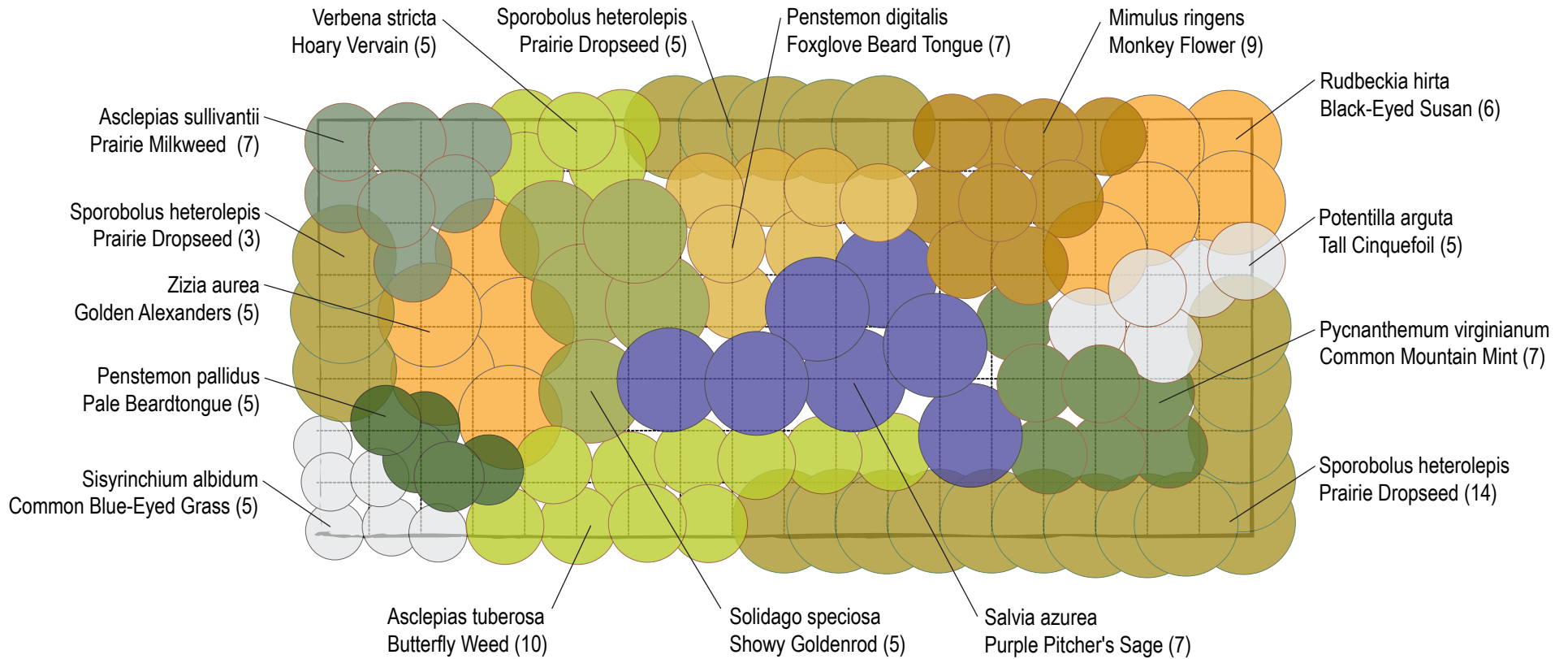


Plot #1

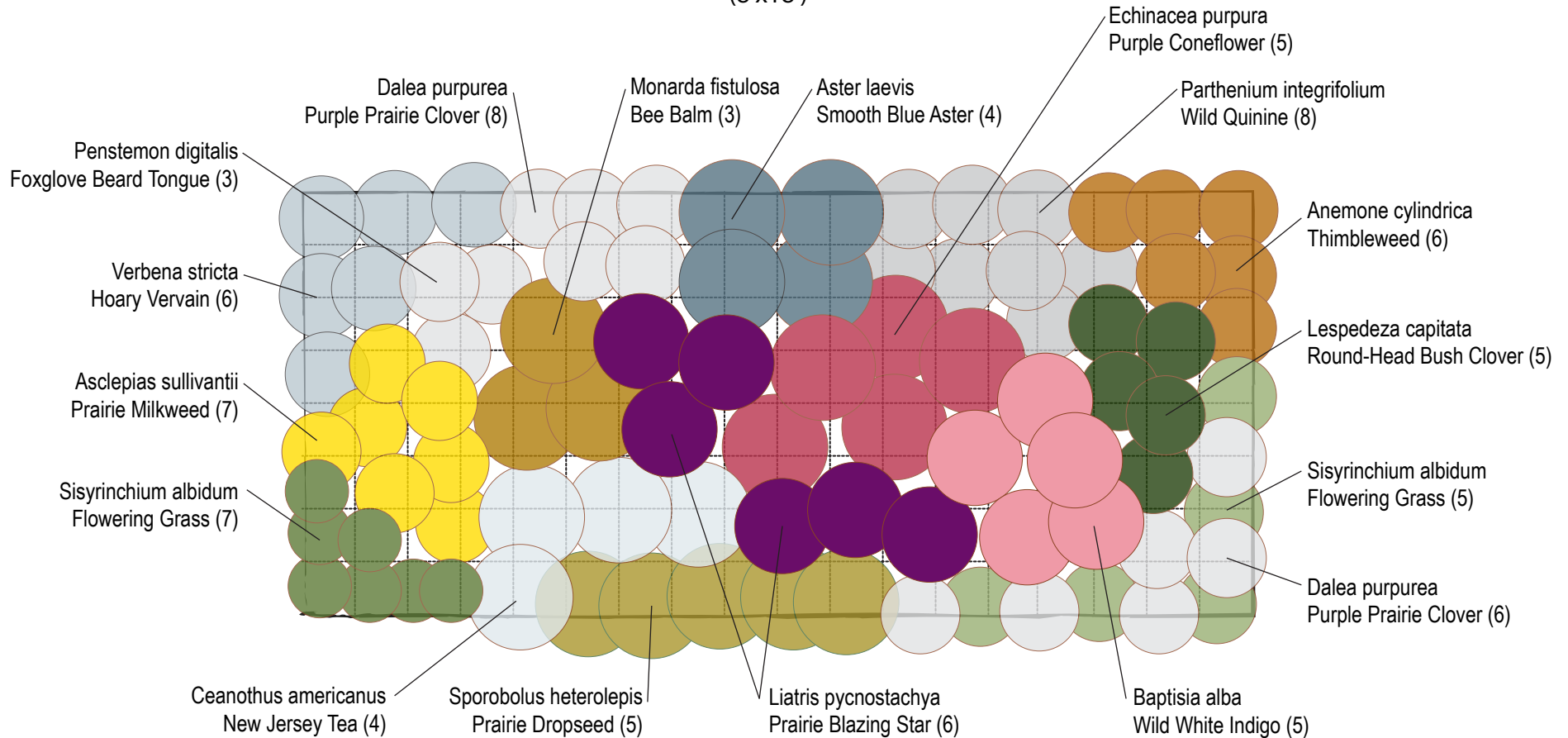
Short Plants (1-2 ft. tall)
(8'x18')



This planting was funded by the U of I Student Sustainability Committee. Plant selection and layout was completed by Paul Littleton, John C. Marlin, and Lesley Deem. Collectively the selected plants will provide pollen and nectar for a variety of insect pollinators during most of the growing season. Many other species could have been used, but these were readily available late in the season. Jeremy Shafer prepared the site. Project coordinator is John C. Marlin, marlin@illinois.edu.

Plot #2

Medium Plants (2-4 ft. tall)
(8'x18')



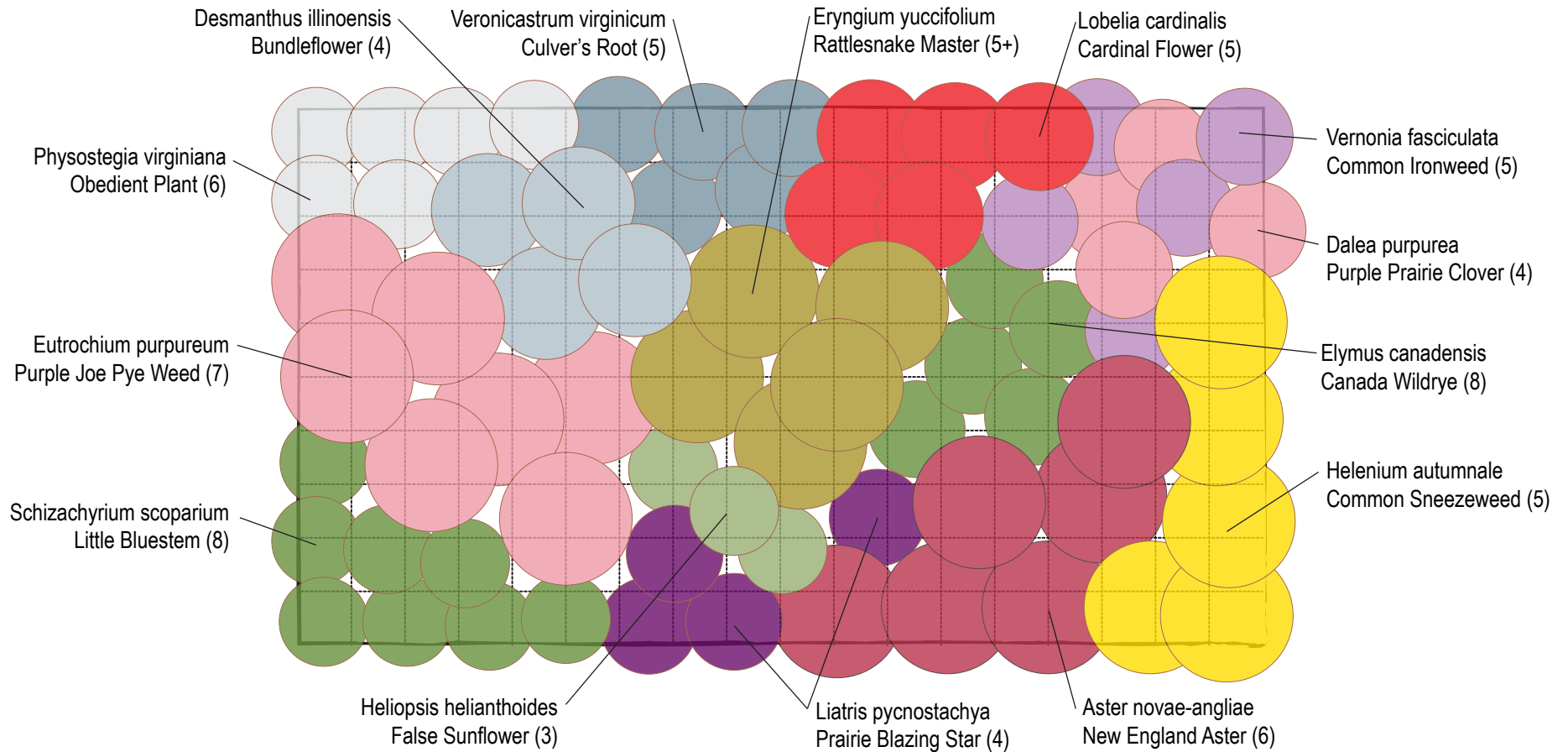
Plot #4 This planting was funded by the U of I Student Sustainability Committee. Plant selection and layout was completed by Paul Littleton, John C. Marlin, and Lesley Deem.
Plot #3 Collectively the selected plants will provide pollen and nectar for a variety of insect pollinators during most of the growing season. Many other species could have been used, but these were readily available late in the season. Jeremy Shafer prepared the site. Project coordinator is John C. Marlin, marlin@illinois.edu.
Plot #2
Plot #1

Plot #4
 Plot #3
 Plot #2
 Plot #1

North

Plot # 3

Tall Plants (4-8 ft. tall)
(10'x18')

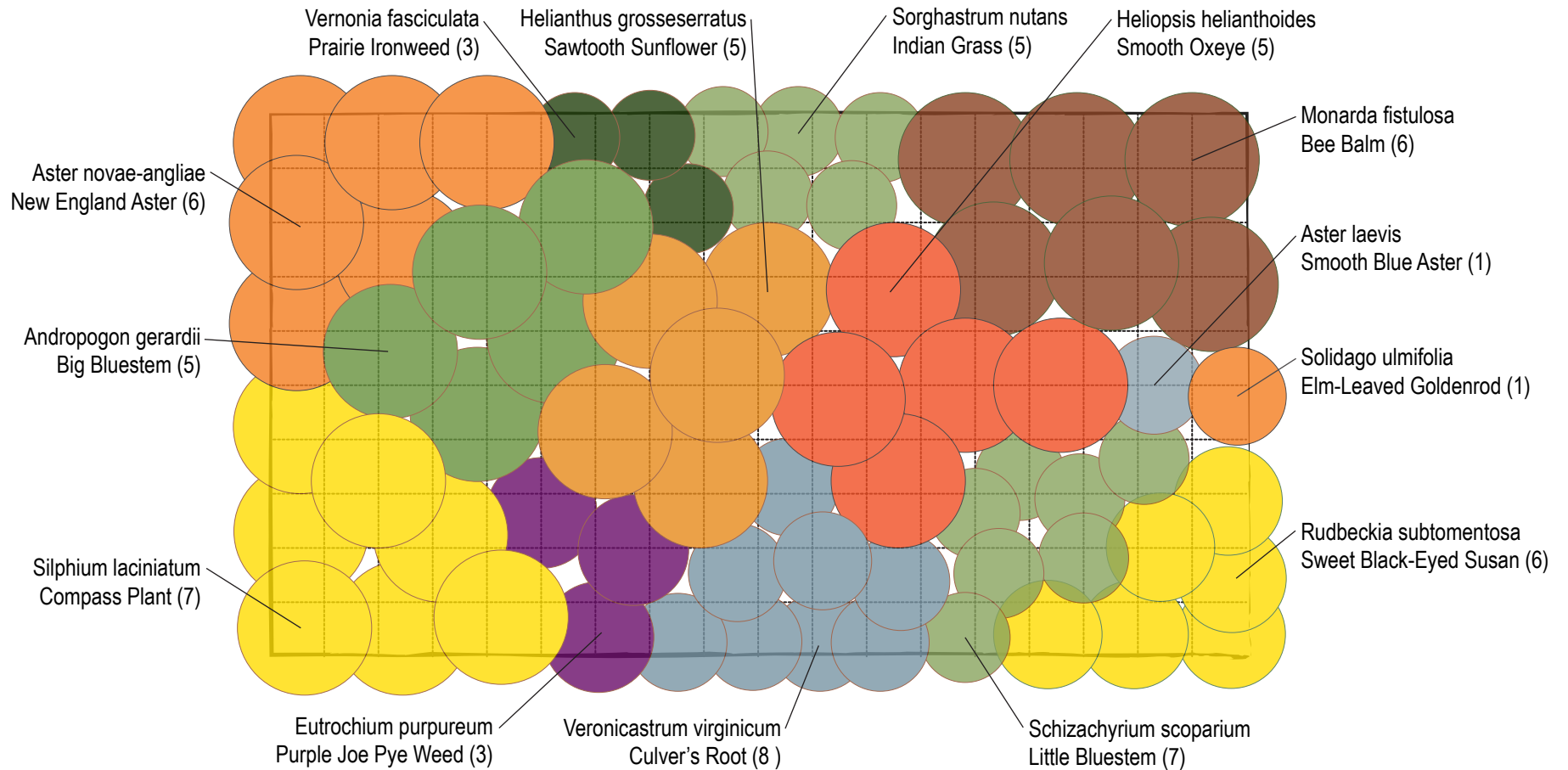


Plot #4 This planting was funded by the U of I Student Sustainability Committee. Plant selection and layout was completed by Paul Littleton, John C. Marlin, and Lesley Deem.
Plot #3 Collectively the selected plants will provide pollen and nectar for a variety of insect pollinators during most of the growing season. Many other species could have been used, but these were readily available late in the season. Jeremy Shafer prepared the site. Project coordinator is John C. Marlin, marlin@illinois.edu.
Plot #2
Plot #1



Plot # 4

Tall and Medium Plants with Grasses (4-8 ft. tall)
(10'x18')



Plot #4 This planting was funded by the U of I Student Sustainability Committee. Plant selection and layout was completed by Paul Littleton, John C. Marlin, and Lesley Deem.
Plot #3 Collectively the selected plants will provide pollen and nectar for a variety of insect pollinators during most of the growing season. Many other species could have been used, but these were readily available late in the season. Jeremy Shafer prepared the site. Project coordinator is John C. Marlin, marlin@illinois.edu.
Plot #2
Plot #1

