

Notes:

Design concept based on 2008 St. Mary's Road Corridor Study by the Champaign County Regional Planning Commission.

Proposed sidewalk will be 8" thick, have expansion joints at a maximum of 40' apart, have score joints at a maximum of 6' apart, and provide positive drainage at slope of 1/4 inch per foot. Approximately 3,593 sq. ft. of sidewalk to be added. Approximately 435 sq. ft. of landscaping needed at Neil intersection.

- Legend:
- Existing sidewalks
 - Existing buildings
 - Crosswalks
 - Stopslines
 - New road edge
 - New lane lines (yellow)
 - New lane lines (white)
 - New sidewalks
 - Sign
 - Landscaped area

1" = 50'



PRODUCED BY AN AUTODESK EDUCATIONAL PRODUCT

PRODUCED BY AN AUTODESK EDUCATIONAL PRODUCT

Facilities & Services



Drawing by: Holly Nelson

Date: 5/18/2012

Scale: 1" = 50'

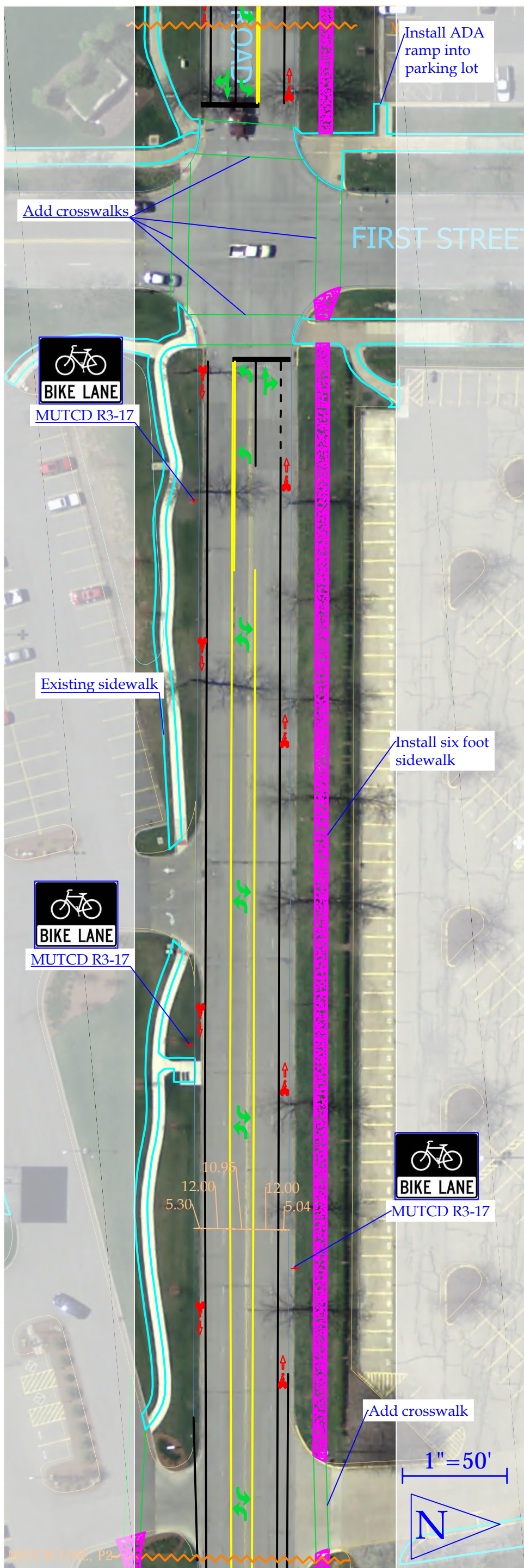
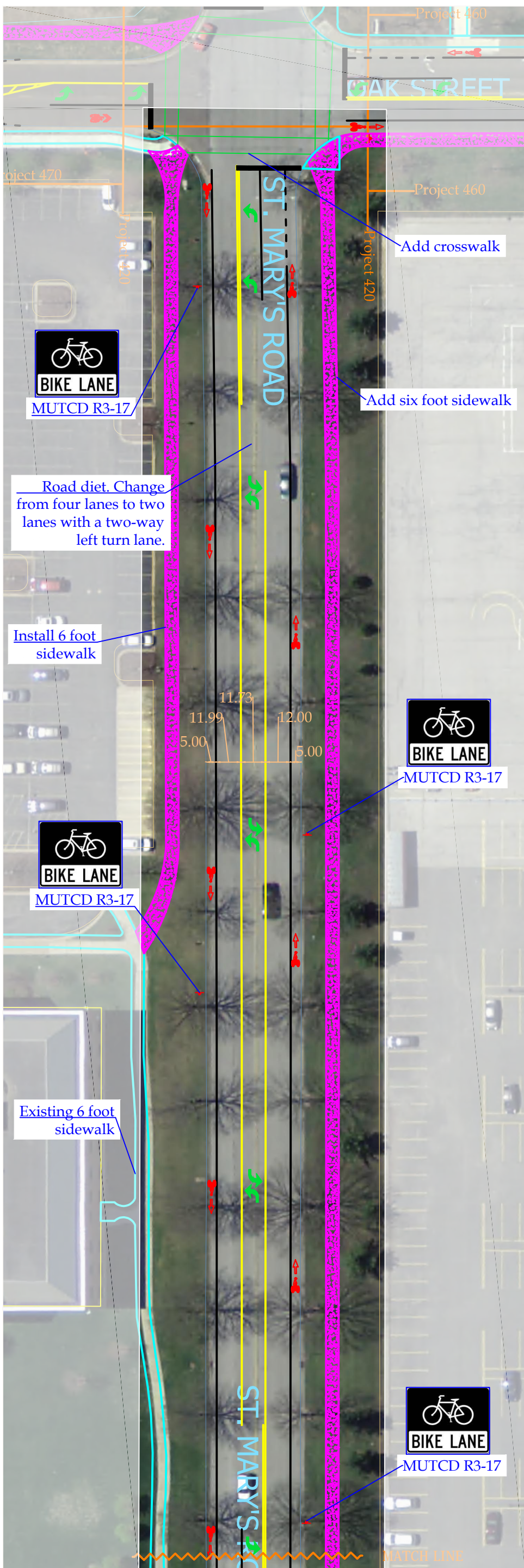
Project Number: 410

Drawing Number: 1/1

Description: St. Mary's Road from Neil to Oak

PROPOSED CAMPUS BICYCLE NETWORK





PRODUCED BY AN AUTODESK EDUCATIONAL PRODUCT

PRODUCED BY AN AUTODESK EDUCATIONAL PRODUCT

Facilities & Services



UNIVERSITY OF ILLINOIS AT URBANA-CHAMPAIGN

Drawing by: Holly Nelson

Date: 5/17/2012

Scale: 1" = 50'

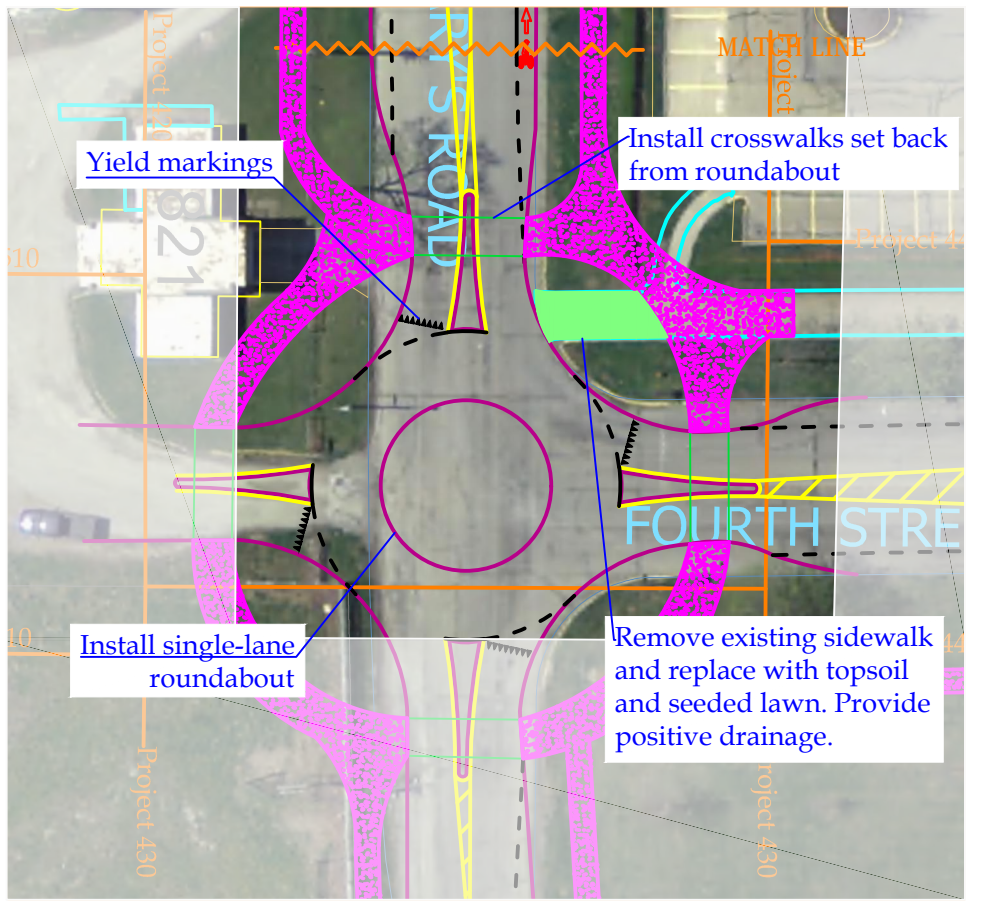
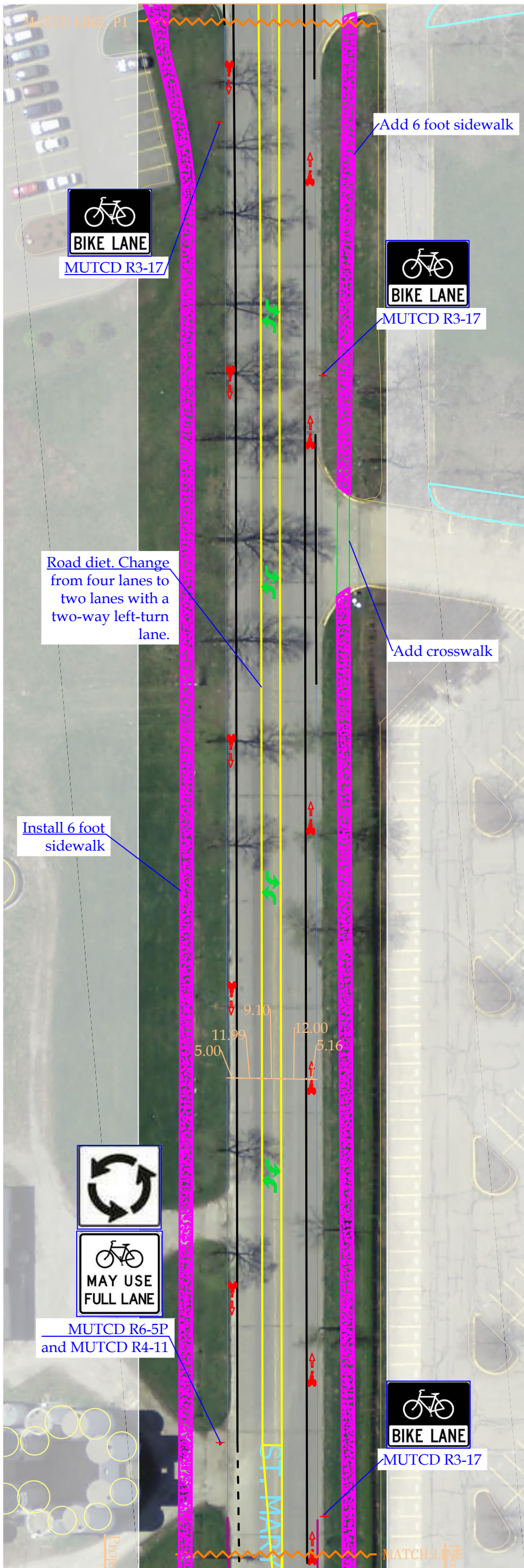
Project Number: 420

Drawing Number: 1/2

Description: St. Mary's Road from Oak to Fourth

PROPOSED CAMPUS BICYCLE NETWORK





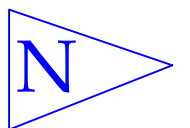
Notes:

Design concept based on 2008 St. Mary's Road Corridor Study by the Champaign County Regional Planning Commission.

Proposed sidewalk will be 8" thick, have expansion joints at a maximum of 40' apart, have score joints at a maximum of 6' apart, and provide positive drainage at slope of 1/4 inch per foot. Approximately 13,571 sq. ft. of sidewalk to be added. Approximately 362 sq. ft. of landscaping needed at Fourth Street intersection.

- Legend:
- Existing sidewalks
 - Existing buildings
 - Crosswalks
 - Stoplines
 - New road edge
 - New lane lines (yellow)
 - New lane lines (white)
 - New sidewalks
 - Sign
 - Landscaped area

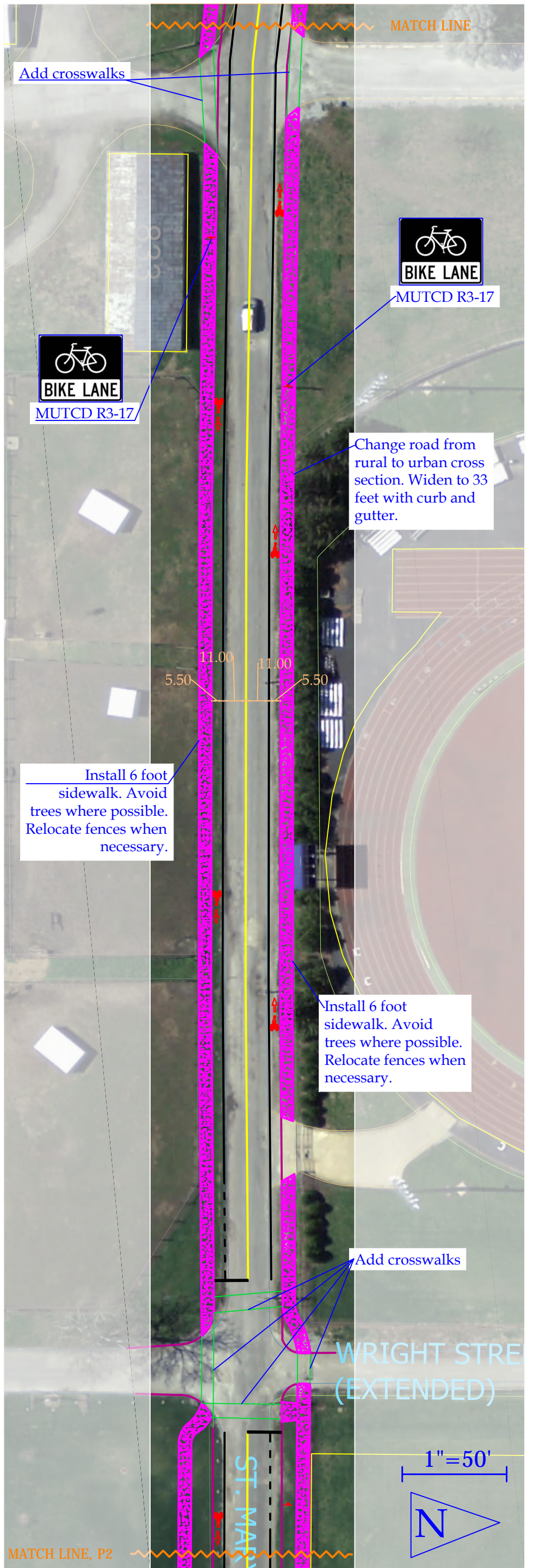
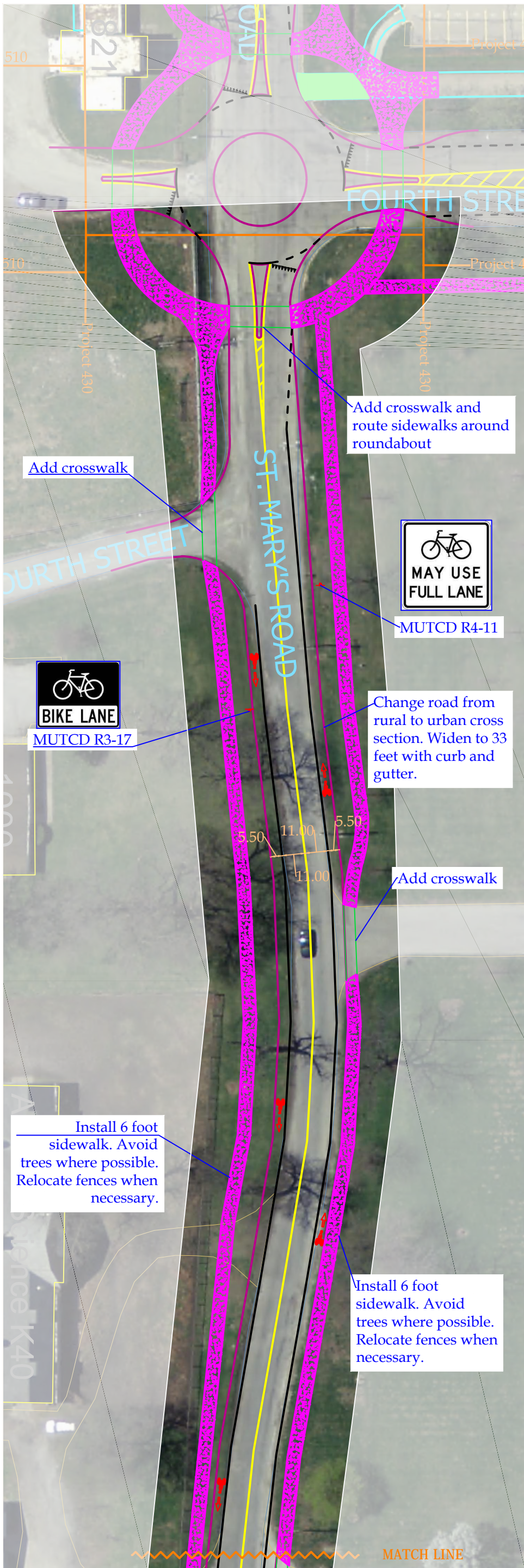
1" = 50'



PRODUCED BY AN AUTODESK EDUCATIONAL PRODUCT

PRODUCED BY AN AUTODESK EDUCATIONAL PRODUCT

<p>Facilities & Services</p> <p>ILLINOIS UNIVERSITY OF ILLINOIS AT URBANA-CHAMPAIGN</p>	Drawing by: Holly Nelson	Project Number: 420	<p>PROPOSED CAMPUS BICYCLE NETWORK</p>
	Date: 5/17/2012	Drawing Number: 2/2	
	Scale: 1" = 50'	Description: St. Mary's Road from Oak to Fourth	



PRODUCED BY AN AUTODESK EDUCATIONAL PRODUCT

PRODUCED BY AN AUTODESK EDUCATIONAL PRODUCT

Facilities & Services



UNIVERSITY OF ILLINOIS AT URBANA-CHAMPAIGN

Drawing by: Holly Nelson

Date: 5/23/2012

Scale: 1" = 50'

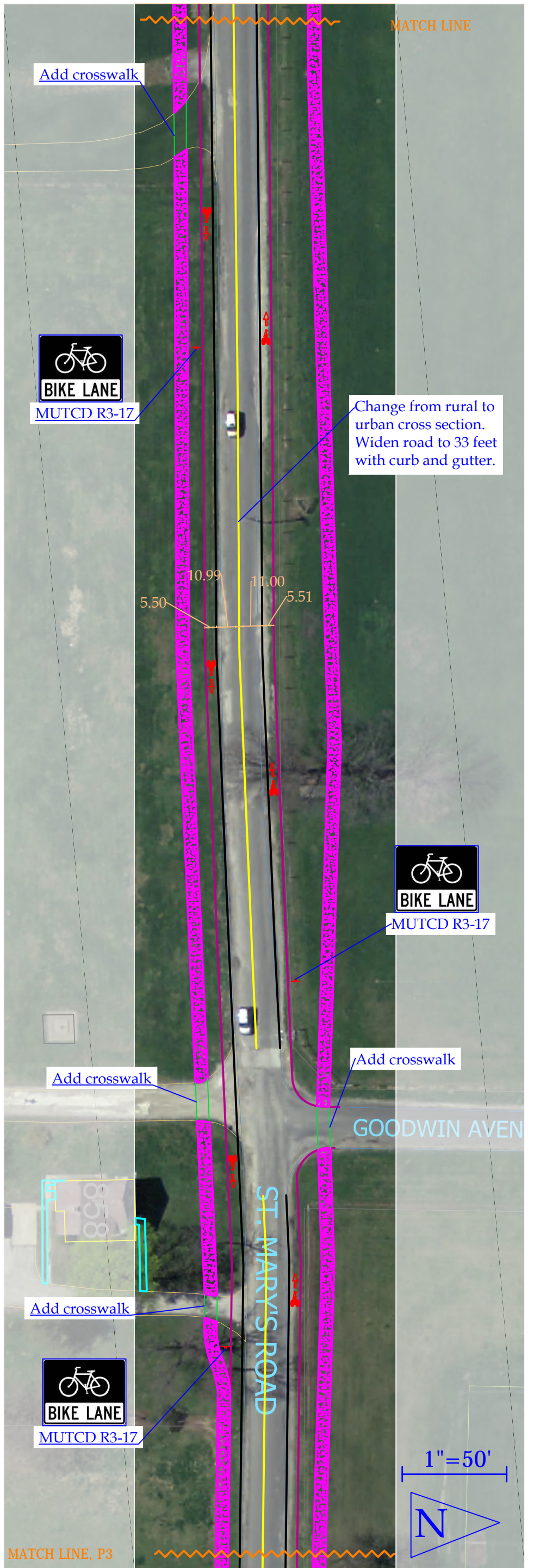
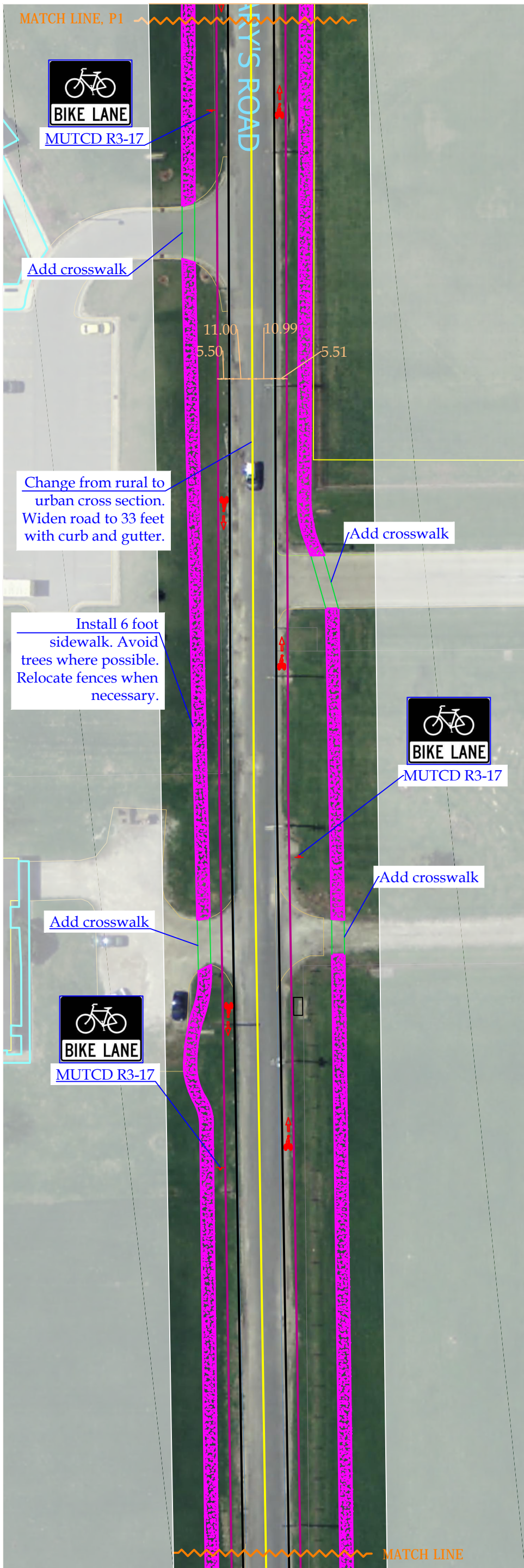
Project Number: 430

Drawing Number: 1/3

Description: St. Mary's Road from Fourth to Lincoln

PROPOSED CAMPUS BICYCLE NETWORK





PRODUCED BY AN AUTODESK EDUCATIONAL PRODUCT

PRODUCED BY AN AUTODESK EDUCATIONAL PRODUCT

Facilities & Services



UNIVERSITY OF ILLINOIS AT URBANA-CHAMPAIGN

Drawing by: Holly Nelson

Date: 5/23/2012

Scale: 1" = 50'

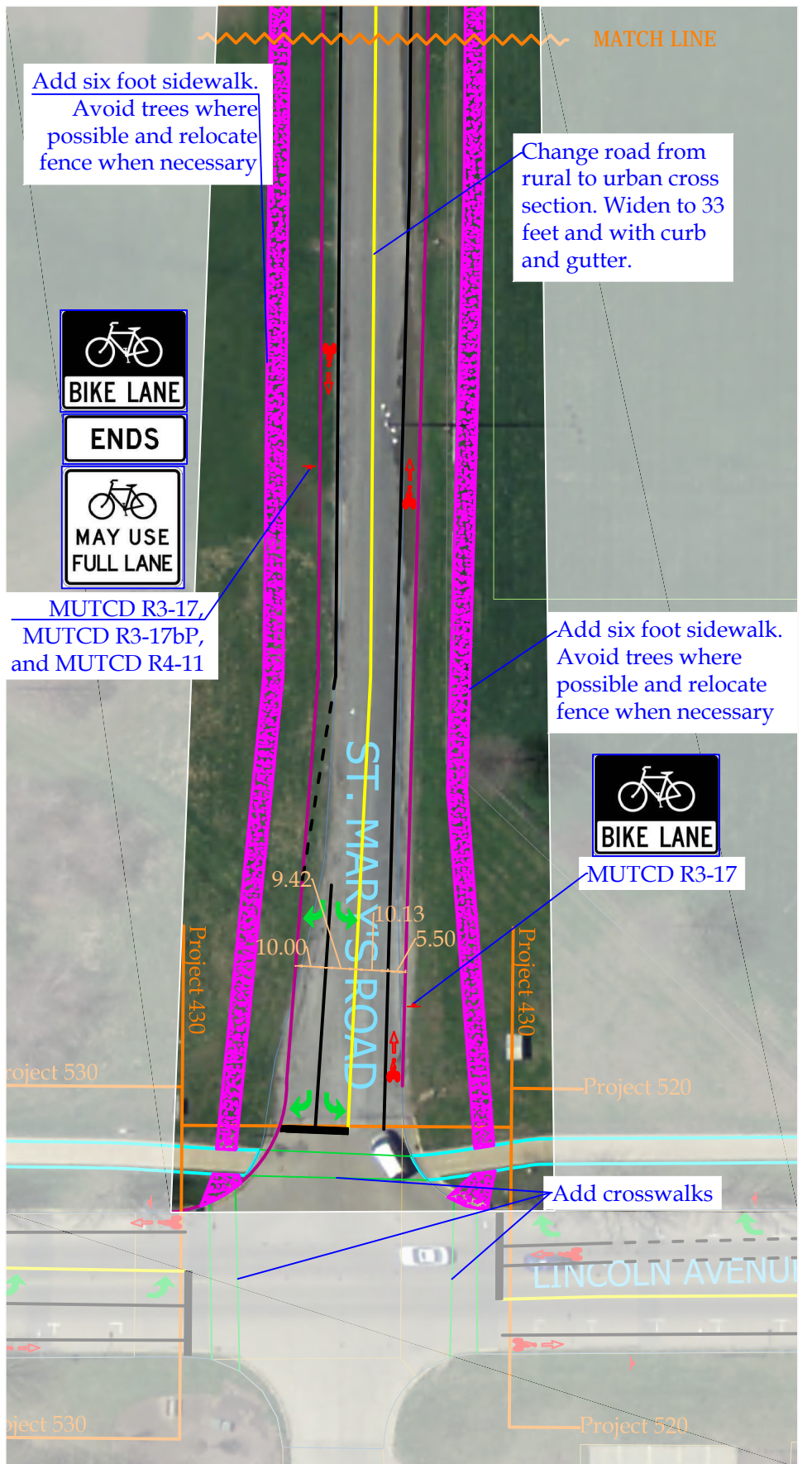
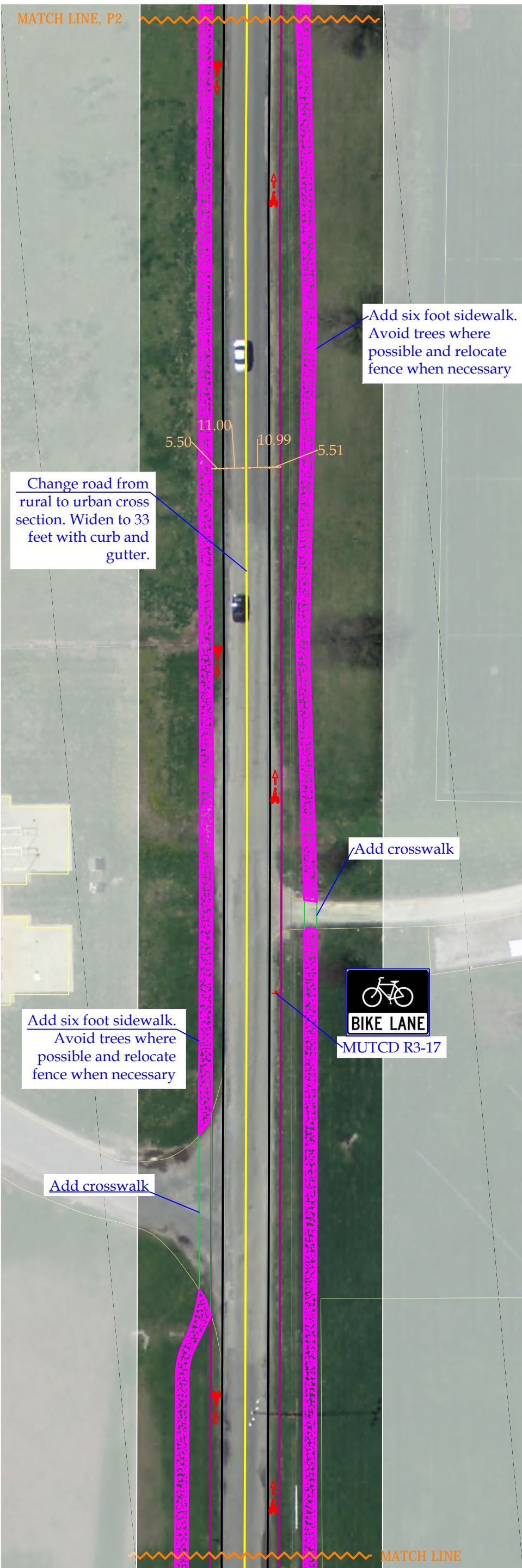
Project Number: 430

Drawing Number: 2/3

Description: St. Mary's Road from Fourth to Lincoln

PROPOSED CAMPUS BICYCLE NETWORK



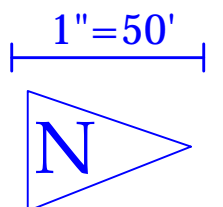


Notes:

Proposed 6' wide sidewalks will be 8" thick, have expansion joints at a maximum of 40' apart, have score joints at a maximum of 6' apart, and provide positive drainage at slope of 1/4 inch per foot.

Relocate fences when necessary to install sidewalk and storm sewers.

- Legend:
- Existing sidewalks
 - Existing buildings
 - Crosswalks
 - Stoplines
 - New road edge
 - New lane lines (yellow)
 - New lane lines (white)
 - New sidewalks
 - Sign
 - Landscaped area



PRODUCED BY AN AUTODESK EDUCATIONAL PRODUCT

PRODUCED BY AN AUTODESK EDUCATIONAL PRODUCT

Facilities & Services
ILLINOIS
 UNIVERSITY OF ILLINOIS AT URBANA-CHAMPAIGN

Drawing by: Holly Nelson
 Date: 5/23/2012
 Scale: 1" = 50'

Project Number: 430
 Drawing Number: 3/3
 Description: St. Mary's Road from Fourth to Lincoln

PROPOSED CAMPUS BICYCLE NETWORK