

PRODUCED BY AN AUTODESK EDUCATIONAL PRODUCT

PRODUCED BY AN AUTODESK EDUCATIONAL PRODUCT

Facilities & Services



UNIVERSITY OF ILLINOIS AT URBANA-CHAMPAIGN

Drawing by: Holly Nelson

Date: 2/10/2012

Scale: 1" = 50'

Project Number: 30

Drawing Number: 1/2

Description: Engineering Bike Path from Wright to Goodwin

PROPOSED CAMPUS BICYCLE NETWORK



Notes:

MUTCD R1-1: Use 18"x18" sign, suitable for shared use path.

MUTCD R9-6: One signpost with two signs (one facing west, one facing east).

MUTCD W11-15: Use 18"x18" sign, suitable for shared use path. Alternate sign option could be "Slow: Pedestrian Crossing" sign below.

Remove parking (15 spaces) near loading zone to Newmark and Hydrosystems Laboratory. Street will have one vehicle lane each direction and bicycle lanes (451 ft bicycle lane striping).

743 sq ft of pavement to be removed at west end of Main Street to create new ramp area that allows cyclists to flow directly into the street (966 sq ft new pavement). 1440 sq ft of pavement to be removed at east end of Main Street to create new ramp area that allows cyclists to flow directly into the street (1943 sq ft pavement). Approximately 263 sq ft of pavement to be replaced by landscaping. Total pavement removed is 2579 sq ft and total pavement poured is 2909 sq ft. New pavement will be 8" thick, have expansion joints at a maximum of 40' apart, have score joints at a maximum of 6' apart, and provide positive drainage at slope of 1/4 inch per foot.





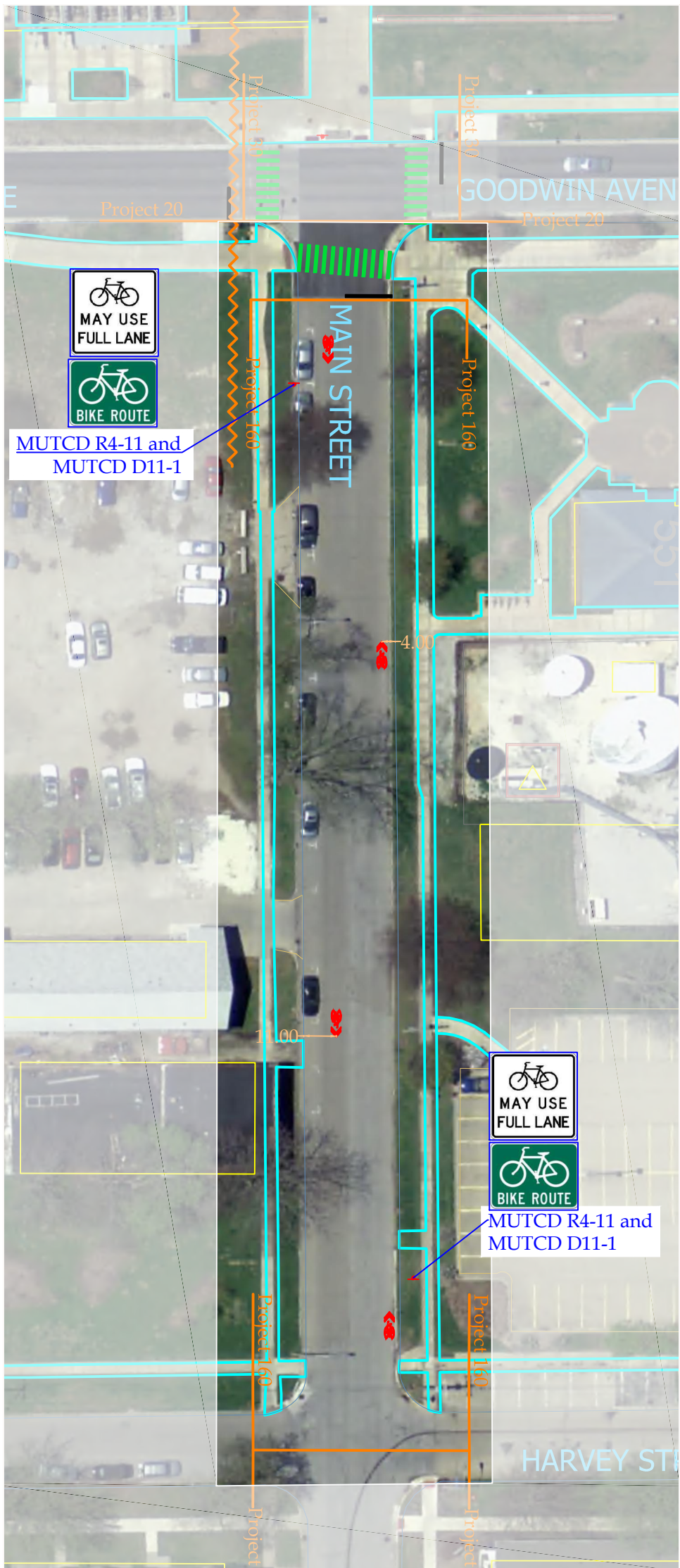
PRODUCED BY AN AUTODESK EDUCATIONAL PRODUCT

PRODUCED BY AN AUTODESK EDUCATIONAL PRODUCT





- Legend:
- Existing sidewalks
 - Existing buildings
 - Crosswalks
 - Stoplines
 - New road edge
 - New lane lines (yellow)
 - New lane lines (white)
 - New sidewalks
 - Sign
 - Landscaped area



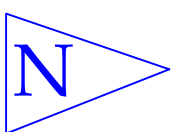
 FACILITIES & SERVICES ILLINOIS UNIVERSITY OF ILLINOIS AT URBANA-CHAMPAIGN	Drawing by: Holly Nelson	Project Number: 30	PROPOSED CAMPUS BICYCLE NETWORK 
	Date: 2/10/2012	Drawing Number: 2/2	
	Scale: 1" = 50'	Description: Engineering Bike Path from Wright to Goodwin	





Center of shared lane marking should be placed at least 11' from face of south curb and 4' from face of north curb. Place immediately after intersections and at intervals of no more than 250'.

- Legend:
-  Existing sidewalks
 -  Existing buildings
 -  Crosswalks
 -  Stoplines
 -  New road edge
 -  New lane lines (yellow)
 -  New lane lines (white)
 -  New sidewalks
 -  Sign
 -  Landscaped area

1" = 50'



<p>Facilities & Services</p>  <p>ILLINOIS</p> <p>UNIVERSITY OF ILLINOIS AT URBANA-CHAMPAIGN</p>	<p>Drawing by: Holly Nelson</p>	<p>Project Number: 160</p>	<p>PROPOSED CAMPUS BICYCLE NETWORK</p> 
	<p>Date: 4/12/2012</p>	<p>Drawing Number: 1/1</p>	
	<p>Scale: 1" = 50'</p>	<p>Description: Main from Goodwin to Harvey</p>	