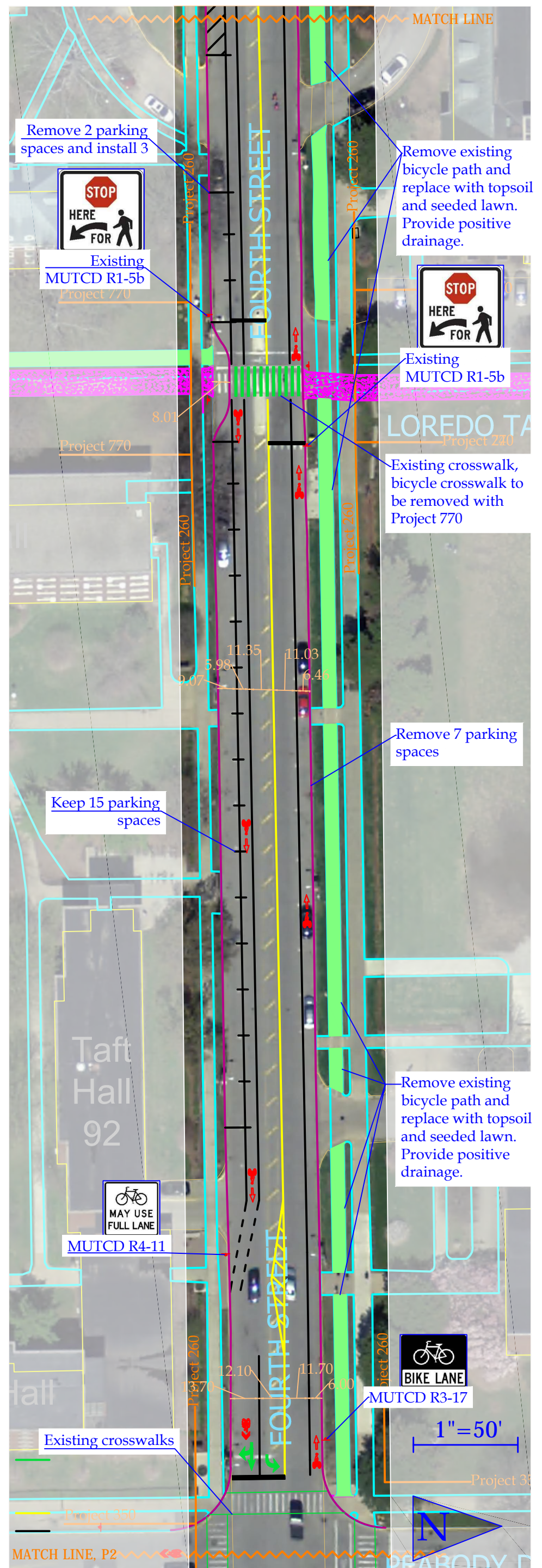
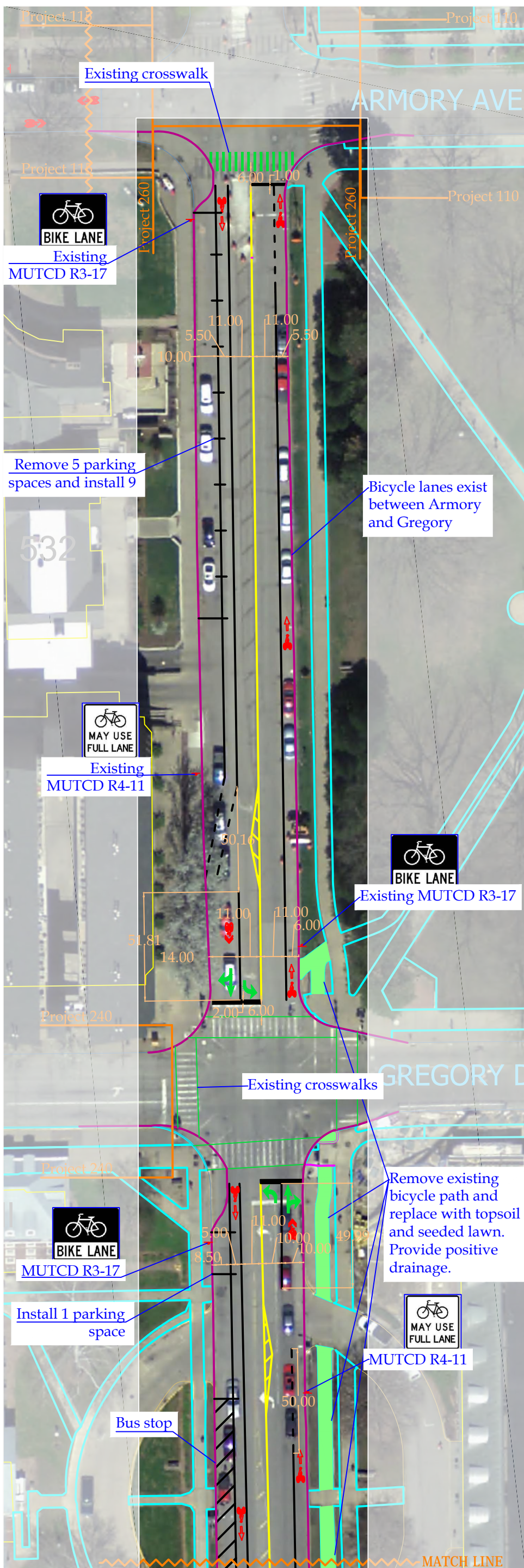


PRODUCED BY AN AUTODESK EDUCATIONAL PRODUCT



PRODUCED BY AN AUTODESK EDUCATIONAL PRODUCT

Facilities & Services



UNIVERSITY OF ILLINOIS AT URBANA-CHAMPAIGN

Drawing by: Holly Nelson

Date: 6/25/2012

Scale: 1" = 50'

Project Number: 260

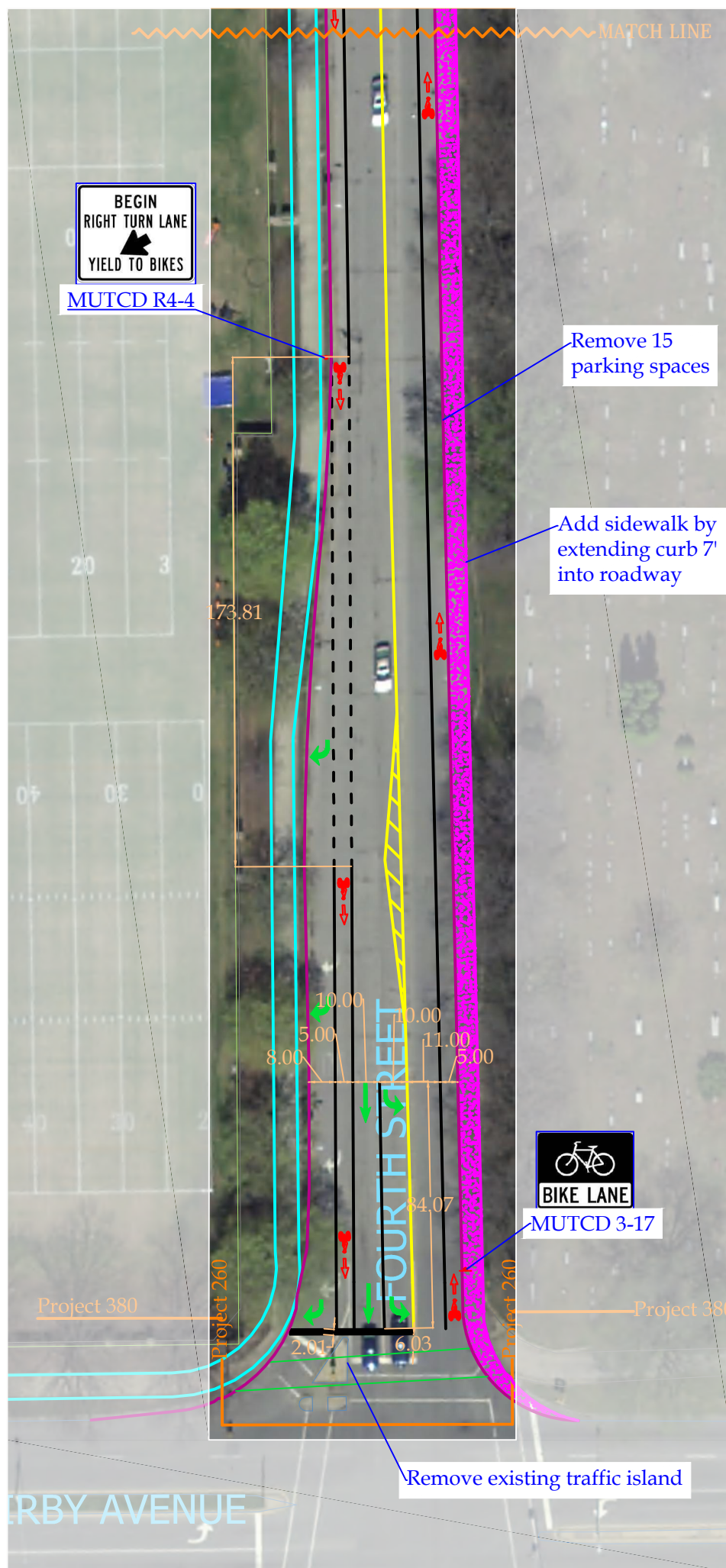
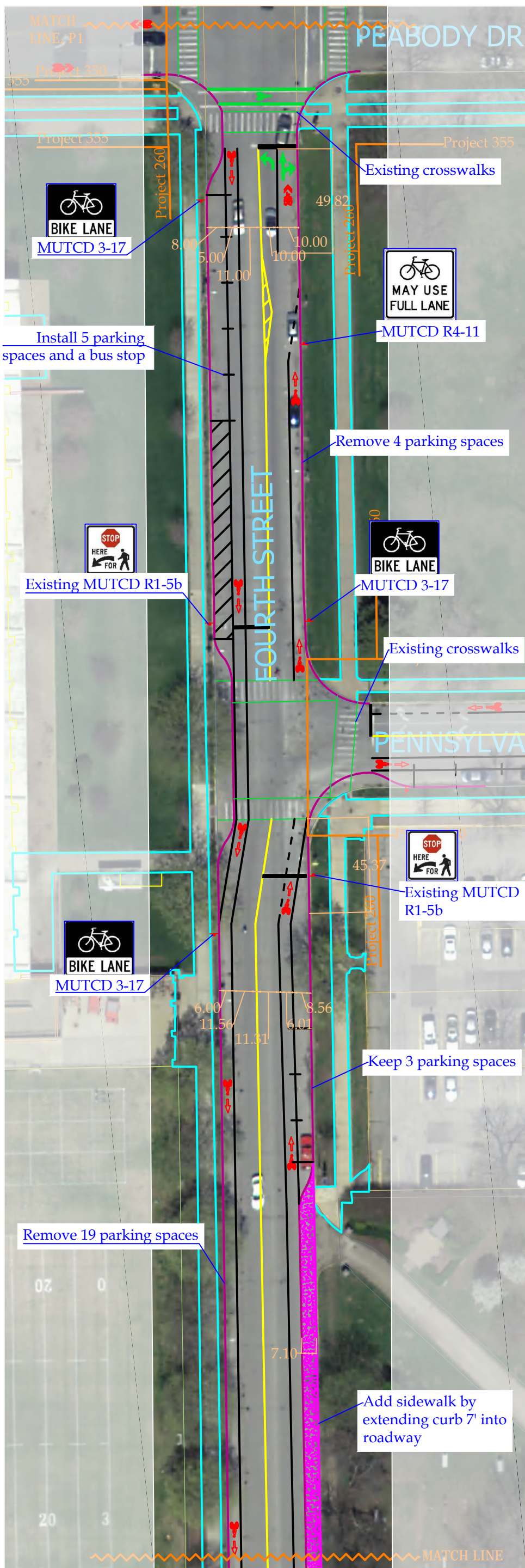
Drawing Number: 1/2

Description: Fourth from Armory to Kirby

PROPOSED CAMPUS BICYCLE NETWORK



PRODUCED BY AN AUTODESK EDUCATIONAL PRODUCT



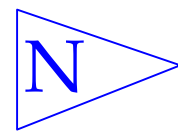
PRODUCED BY AN AUTODESK EDUCATIONAL PRODUCT

Notes:
 Parking changes: 70 existing spaces (City of Champaign) to be replaced by 36 spaces as shown. End spaces are 20' in length and all other spaces are 22' in length. Hash marks to extend 2.5' into bicycle lane.

Proposed 7' wide walk will be 8" thick, have expansion joints at a maximum of 40' apart, have score joints at a maximum of 6' apart, and provide positive drainage at slope of 1/4 inch per foot.

- Legend:
- Existing sidewalks
 - Existing buildings
 - Crosswalks
 - Stoplines
 - New road edge
 - New lane lines (yellow)
 - New lane lines (white)
 - New sidewalks
 - Sign
 - Landscaped area

1" = 50'



Facilities & Services



Drawing by: Holly Nelson

Date: 2/10/2012

Scale: 1" = 50'

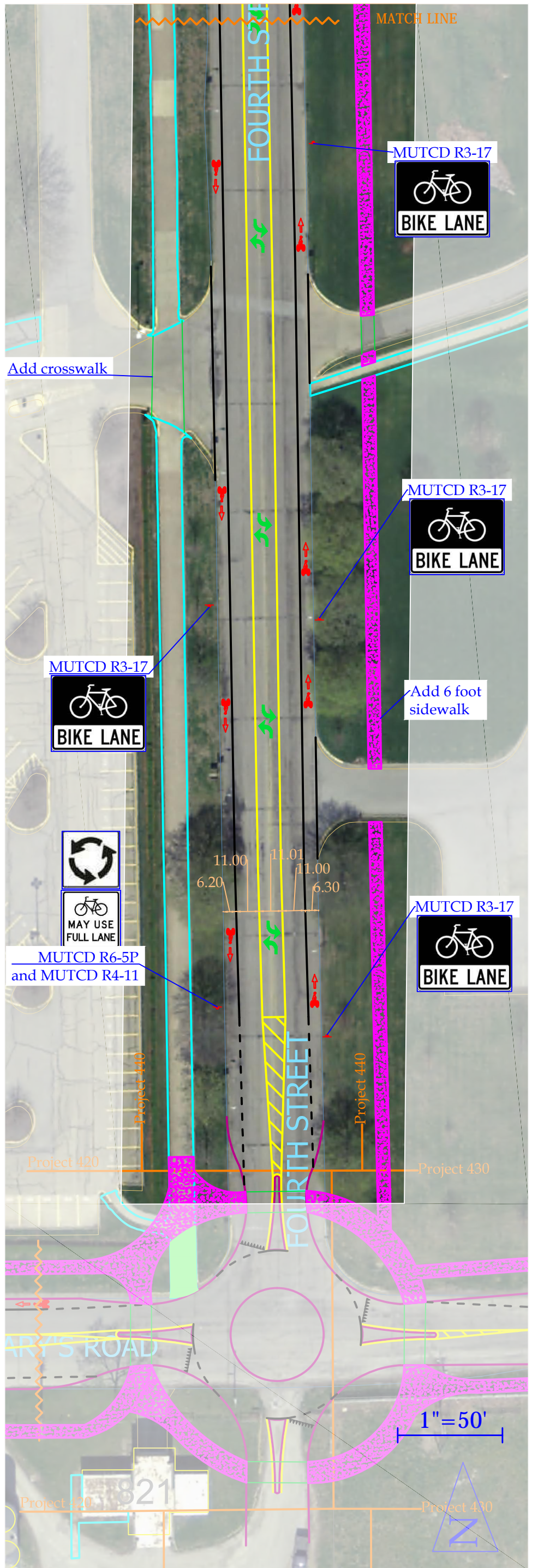
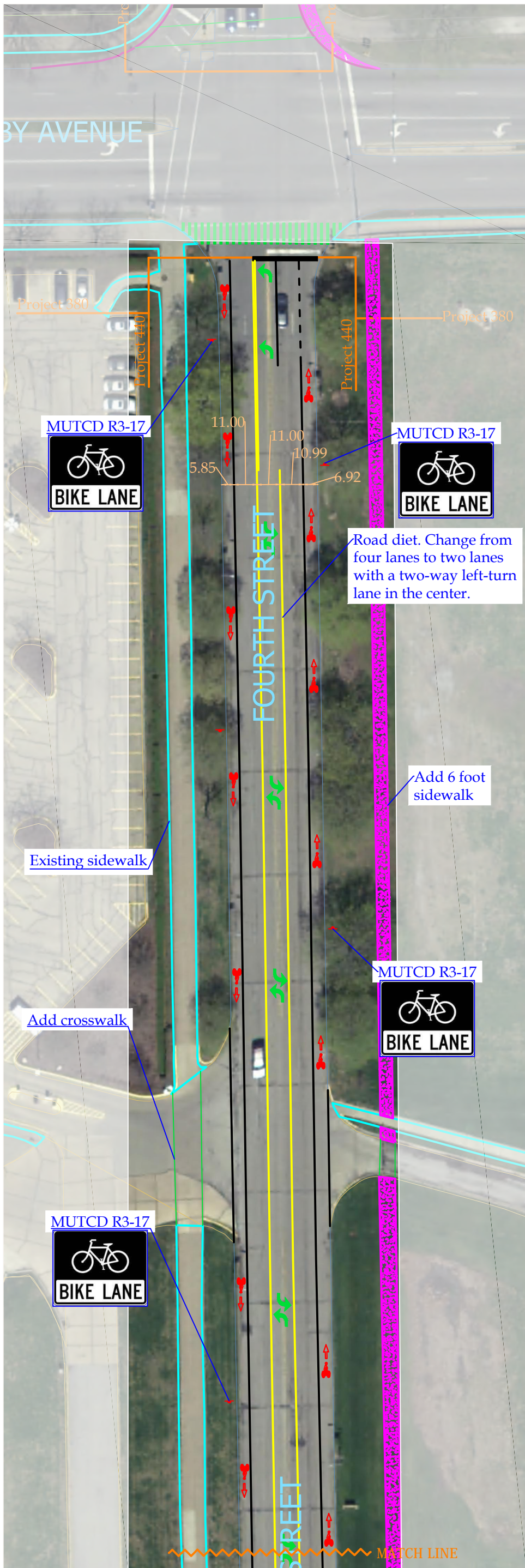
Project Number: 260

Drawing Number: 2/2

Description: Fourth from Armory to Kirby

PROPOSED CAMPUS BICYCLE NETWORK





PRODUCED BY AN AUTODESK EDUCATIONAL PRODUCT

PRODUCED BY AN AUTODESK EDUCATIONAL PRODUCT

Facilities & Services



UNIVERSITY OF ILLINOIS AT URBANA-CHAMPAIGN

Drawing by: Holly Nelson

Date: 6/7/2012

Scale: 1" = 50'

Project Number: 440

Drawing Number: 1/2

Description: Fourth Street from Kirby to St. Mary's

PROPOSED CAMPUS BICYCLE NETWORK

