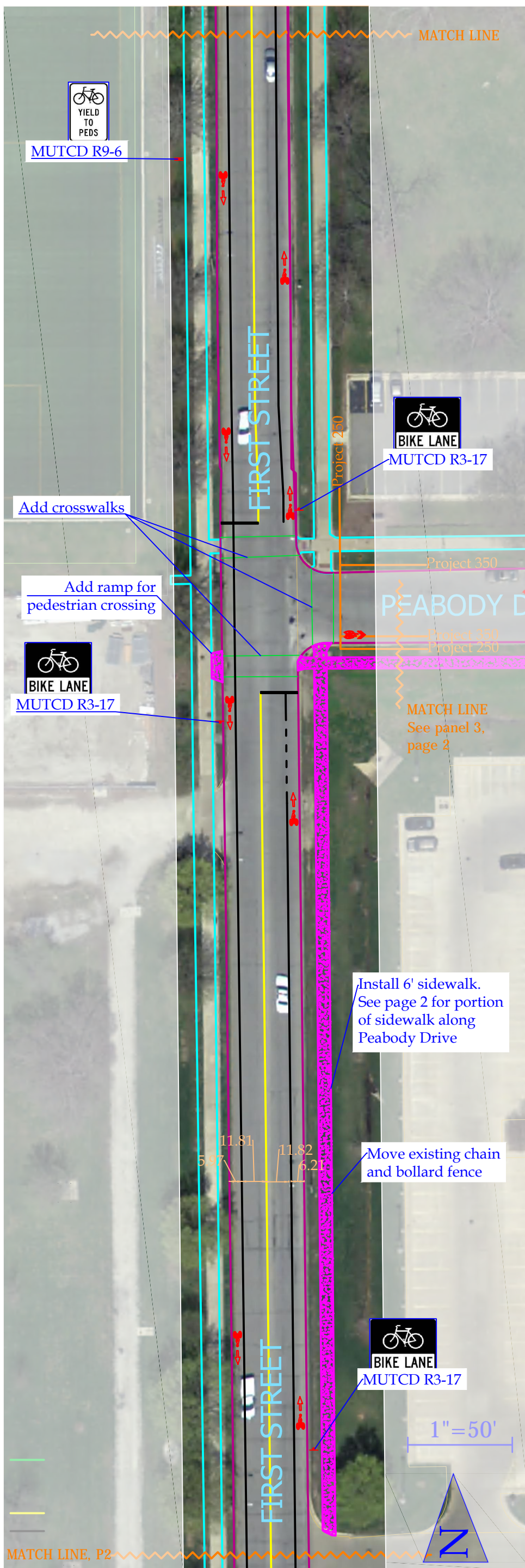
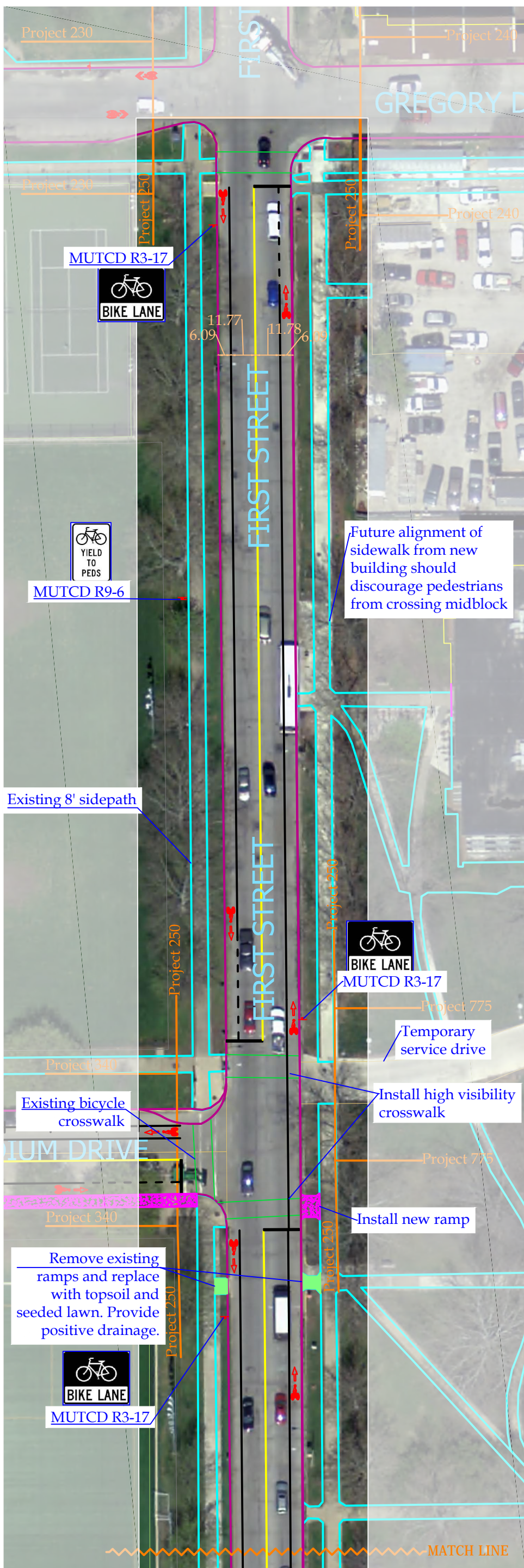


PRODUCED BY AN AUTODESK EDUCATIONAL PRODUCT



PRODUCED BY AN AUTODESK EDUCATIONAL PRODUCT

Facilities & Services



UNIVERSITY OF ILLINOIS AT URBANA-CHAMPAIGN

Drawing by: Holly Nelson

Date: 4/13/2012

Scale: 1" = 50'

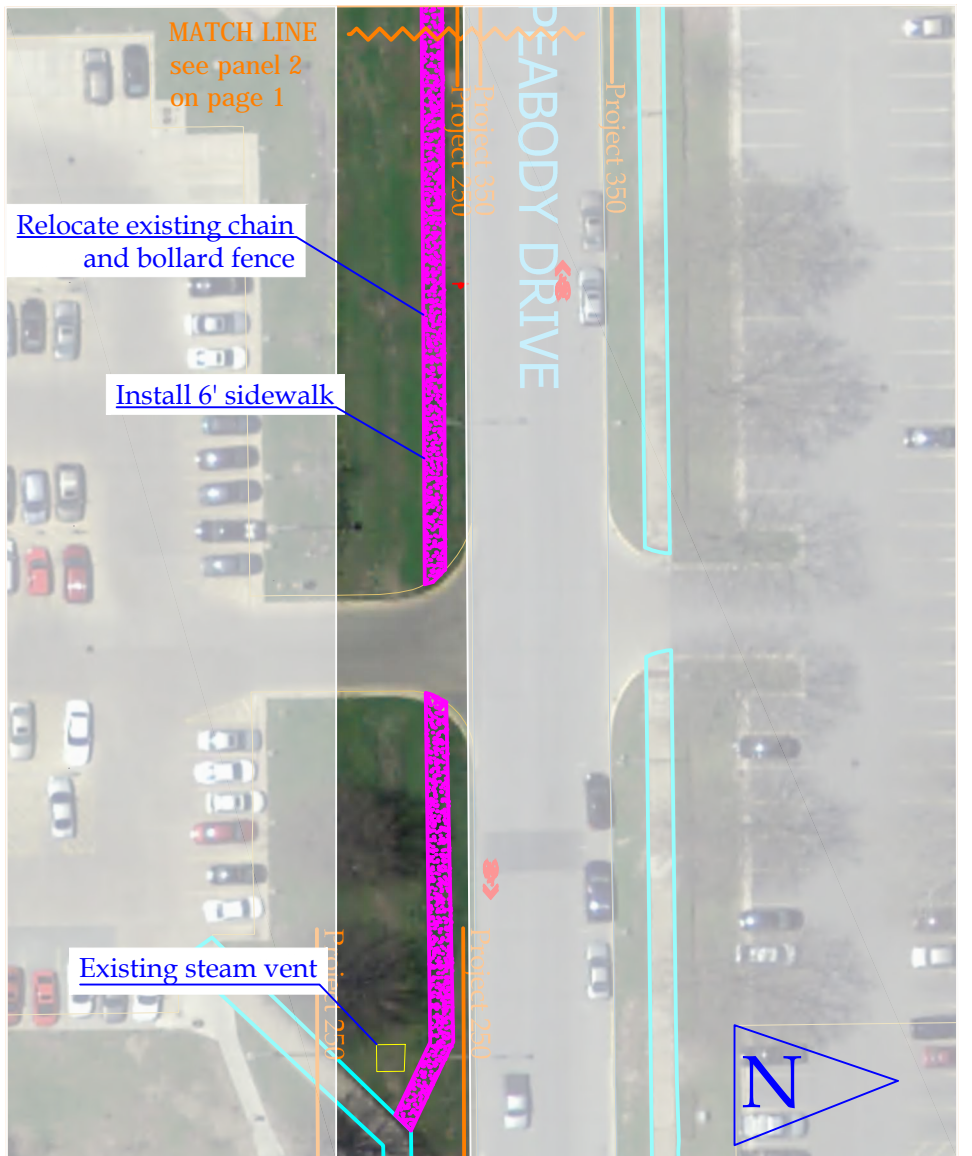
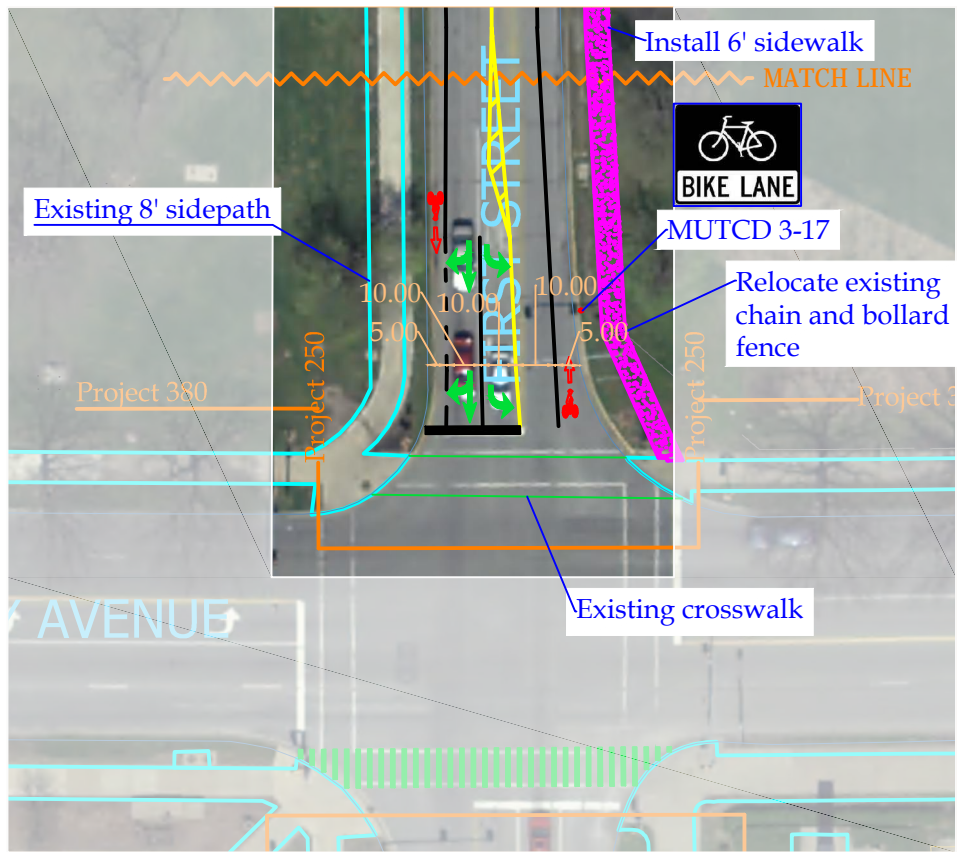
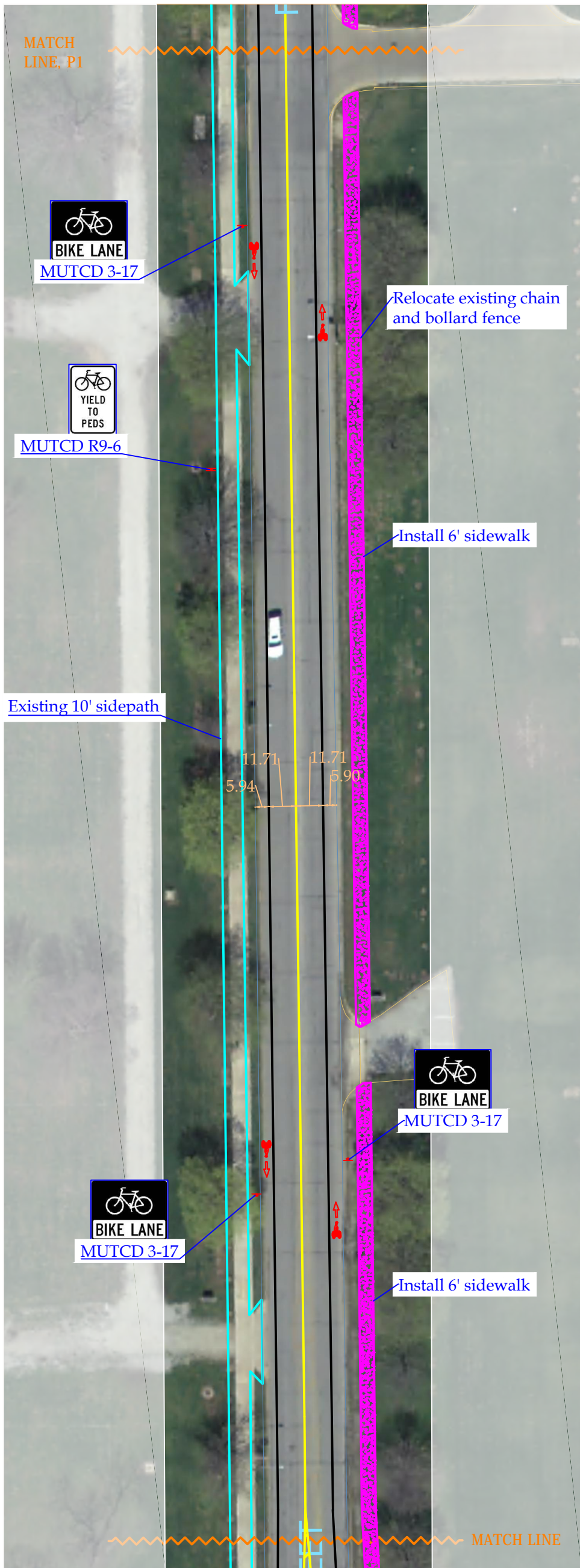
Project Number: 250

Drawing Number: 1/2

Description: First from Gregory to Kirby

PROPOSED CAMPUS BICYCLE NETWORK





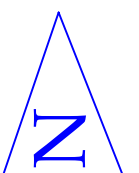
Notes:

Proposed 6' wide walk along First and along Peabody, as well as ramps, will be 8" thick, have expansion joints at a maximum of 40' apart, have score joints at a maximum of 6' apart, and provide positive drainage at slope of 1/4 inch per foot. Existing fence along First Street and Peabody to be relocated to allow for sidewalk.

MUTCD R9-6: One signpost with two signs (one facing north and one facing south).

- Legend:
- Existing sidewalks
 - Existing buildings
 - Crosswalks
 - Stoplines
 - New road edge
 - New lane lines (yellow)
 - New lane lines (white)
 - New sidewalks
 - Sign
 - Landscaped area

1" = 50'



PRODUCED BY AN AUTODESK EDUCATIONAL PRODUCT

PRODUCED BY AN AUTODESK EDUCATIONAL PRODUCT

Facilities & Services



Drawing by: Holly Nelson

Date: 4/13/2012

Scale: 1" = 50'

Project Number: 250

Drawing Number: 2/2

Description: First from Gregory to Kirby

PROPOSED CAMPUS BICYCLE NETWORK

