

Notes:
 MUTCD R1-1: Use 18" x 18" sign, suitable for shared use path.
 MUTCD R3-17: One signpost with two signs (one facing west, one facing east)

Proposed sidewalk and bicycle path will be 8" thick, have expansion joints at a maximum of 40' apart, have score joints at a maximum of 6' apart, and provide positive drainage at slope of 1/4 inch per foot..

- Legend:
- Existing sidewalks
 - Existing buildings
 - Crosswalks
 - Stoplines
 - New road edge
 - New lane lines (yellow)
 - New lane lines (white)
 - New sidewalks
 - Sign
 - Landscaped area

PRODUCED BY AN AUTODESK EDUCATIONAL PRODUCT

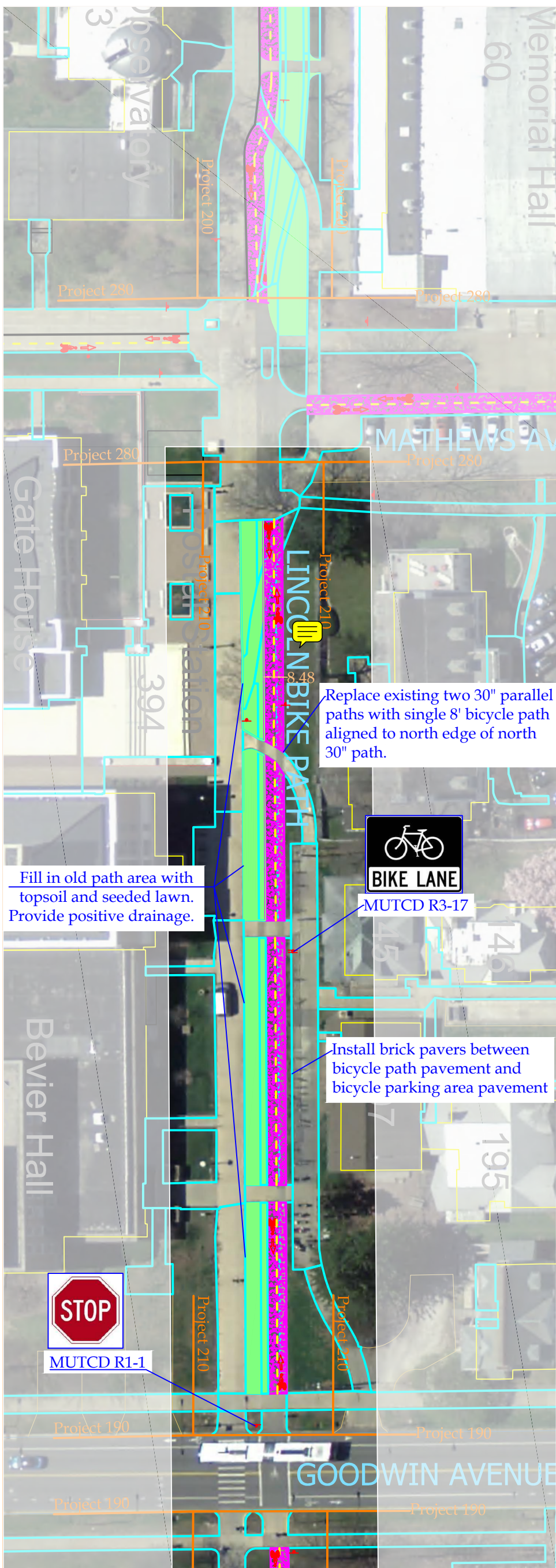
PRODUCED BY AN AUTODESK EDUCATIONAL PRODUCT

Facilities & Services
ILLINOIS
 UNIVERSITY OF ILLINOIS AT URBANA-CHAMPAIGN

Drawing by: Holly Nelson
 Date: 4/19/2012
 Scale: 1" = 50'

Project Number: 220
 Drawing Number: 1/1
 Description: Lincoln Bike Path from Goodwin to Lincoln

PROPOSED CAMPUS BICYCLE NETWORK



Notes:

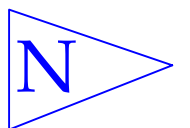
MUTCD R1-1: Use 18" x 18" sign, suitable for shared use path.

MUTCD R3-17: One sign post with two signs (one facing west and one facing east).

Remove two 30" parallel bicycle paths (approximately 2,601 sq. ft. of pavement). Pour new 8' bicycle path along north edge of existing bicycle path. Replace remaining area with topsoil and seeded lawn (approximately 3,703 sq. ft. of landscaped area). Provide positive drainage. Proposed 8' wide bicycle path will be 8" thick, have expansion joints at a maximum of 40' apart, have score joints at a maximum of 6' apart, and provide positive drainage at slope of 1/4 inch per foot (approximately 3,136 sq. ft. of pavement to be added).

- Legend:
- Existing sidewalks
 - Existing buildings
 - Crosswalks
 - Stoplines
 - New road edge
 - New lane lines (yellow)
 - New lane lines (white)
 - New sidewalks
 - Sign
 - Landscaped area

1" = 50'



Facilities & Services



Drawing by: Holly Nelson

Date: 4/6/2012

Scale: 1" = 50'

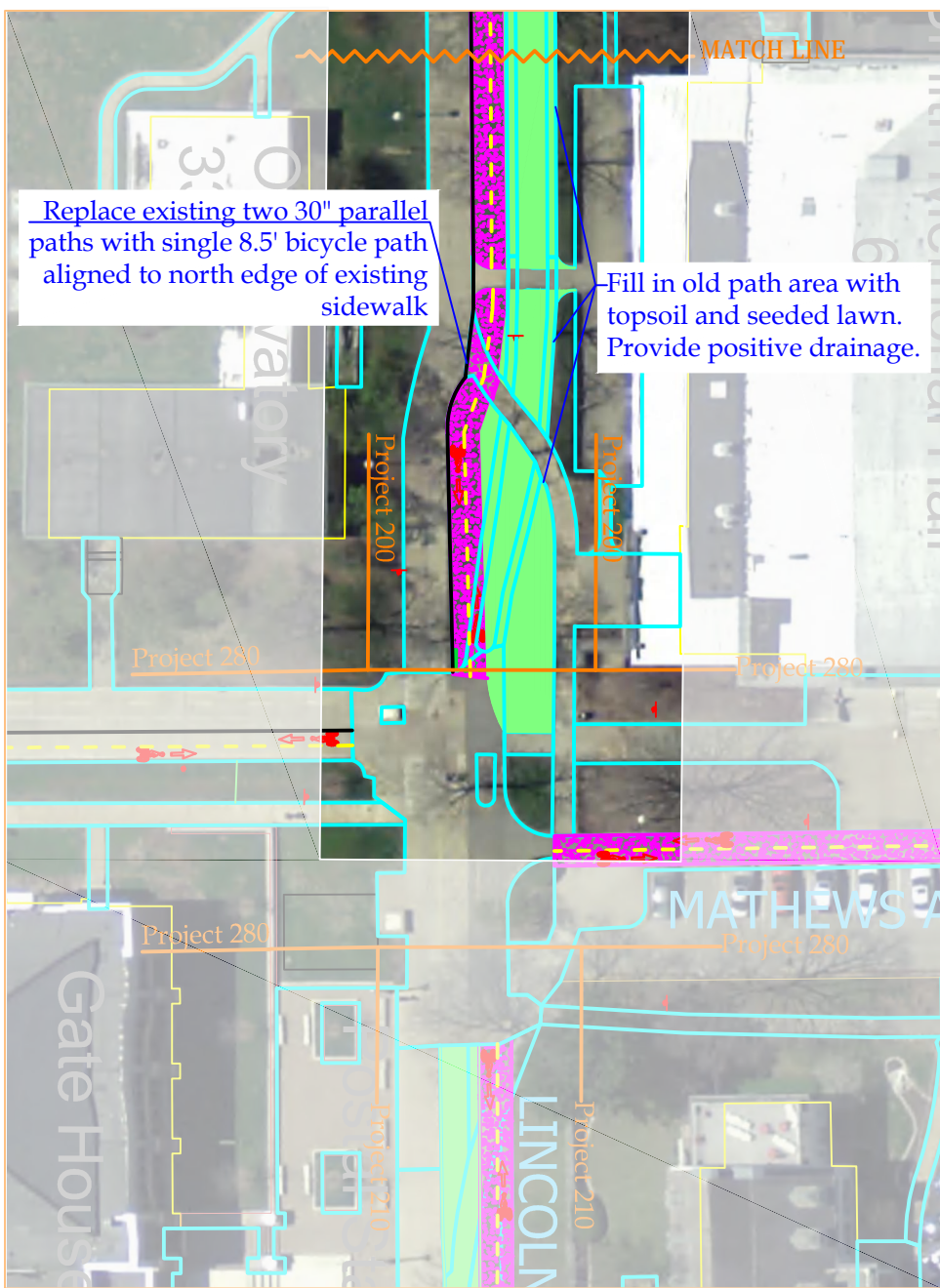
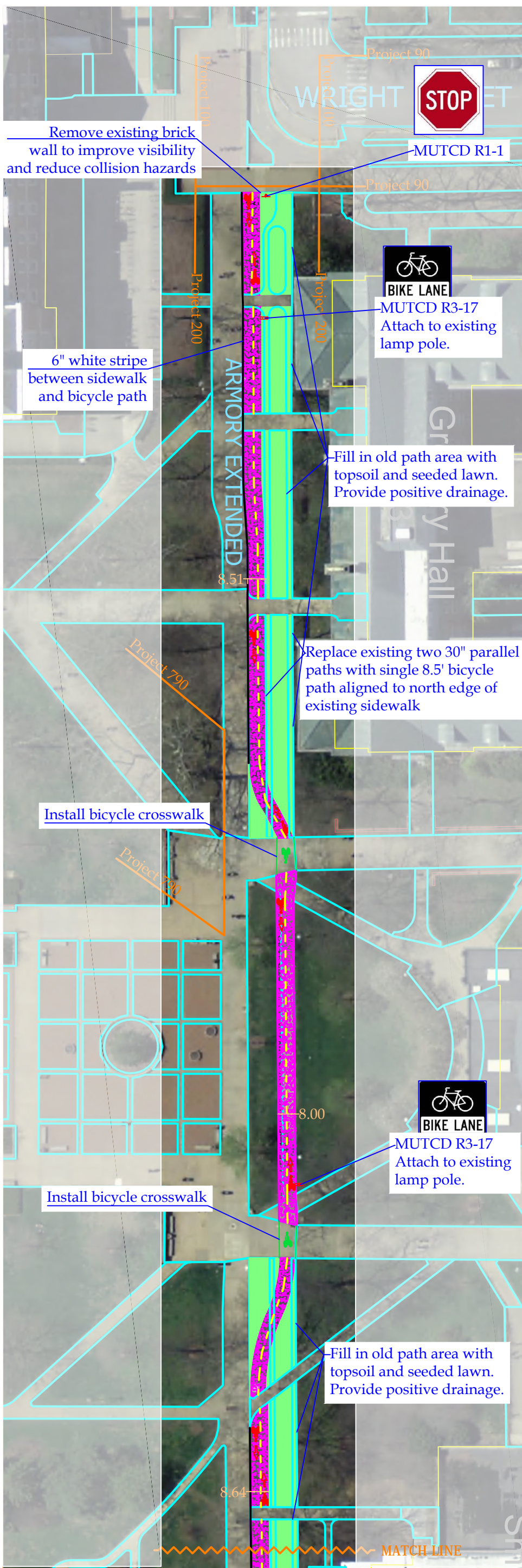
Project Number: 210

Drawing Number: 1/1

Description: Lincoln Bike Path from Mathews to Goodwin

PROPOSED CAMPUS BICYCLE NETWORK





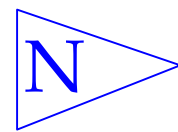
Notes:

MUTCD R3-17: One sign post with two signs (one facing west, one facing east). Use existing lamp poles where possible.

Remove two 30" parallel bicycle paths (approximately 3,852 sq. ft. of pavement). Pour new bicycle path along edge of existing pedestrian sidewalk. Replace remaining area with topsoil and seeded lawn (approximately 8,161 sq. ft. landscaped area). Provide positive drainage. Proposed 8.5' wide bicycle path will be 8" thick, have expansion joints at a maximum of 40' apart, have score joints at a maximum of 6' apart, and provide positive drainage at slope of 1/4 inch per foot (approximately 5,999 sq. ft. of pavement to be added). Extra 6" of pavement provided at south side to paint a white stripe between sidewalk and bicycle path.

- Legend:
- Existing sidewalks
 - Existing buildings
 - Crosswalks
 - Stoplines
 - New road edge
 - New lane lines (yellow)
 - New lane lines (white)
 - New sidewalks
 - Sign
 - Landscaped area

1" = 50'



PRODUCED BY AN AUTODESK EDUCATIONAL PRODUCT

PRODUCED BY AN AUTODESK EDUCATIONAL PRODUCT

Facilities & Services



Drawing by: Holly Nelson

Date: 6/13/2012

Scale: 1" = 50'

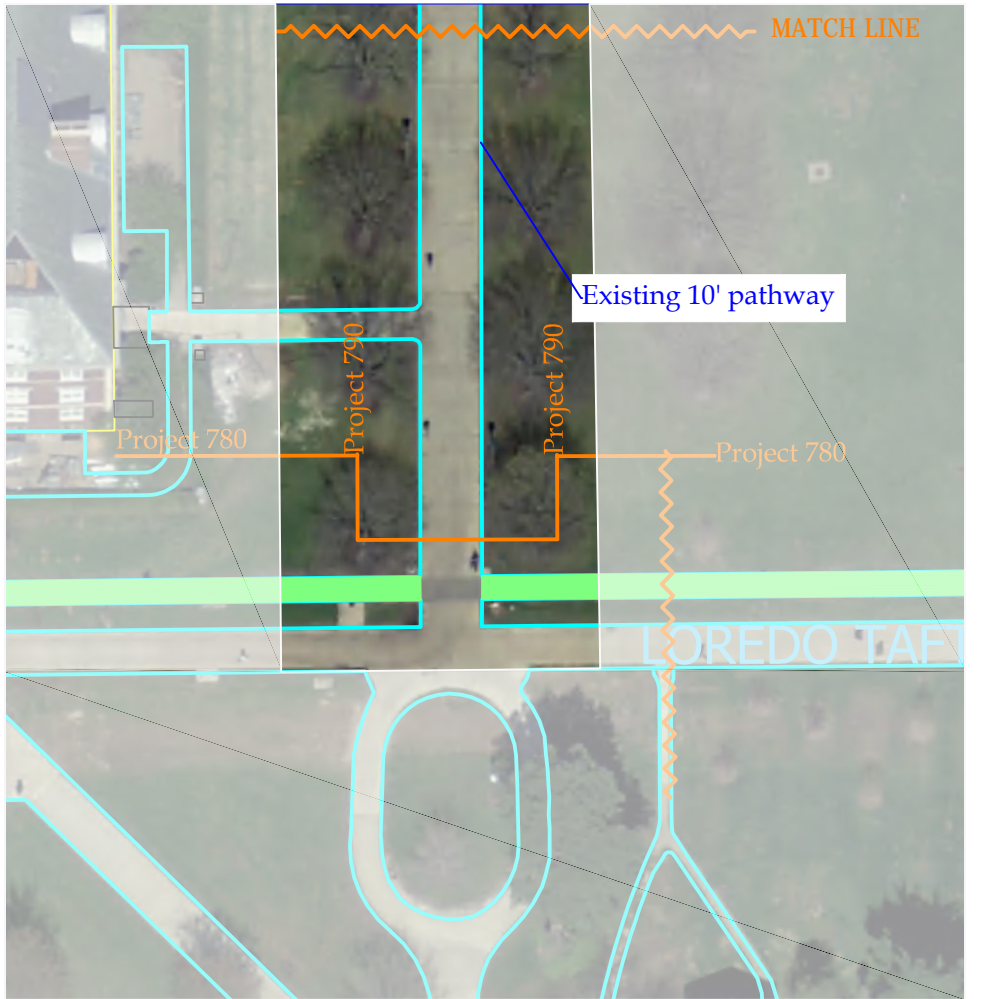
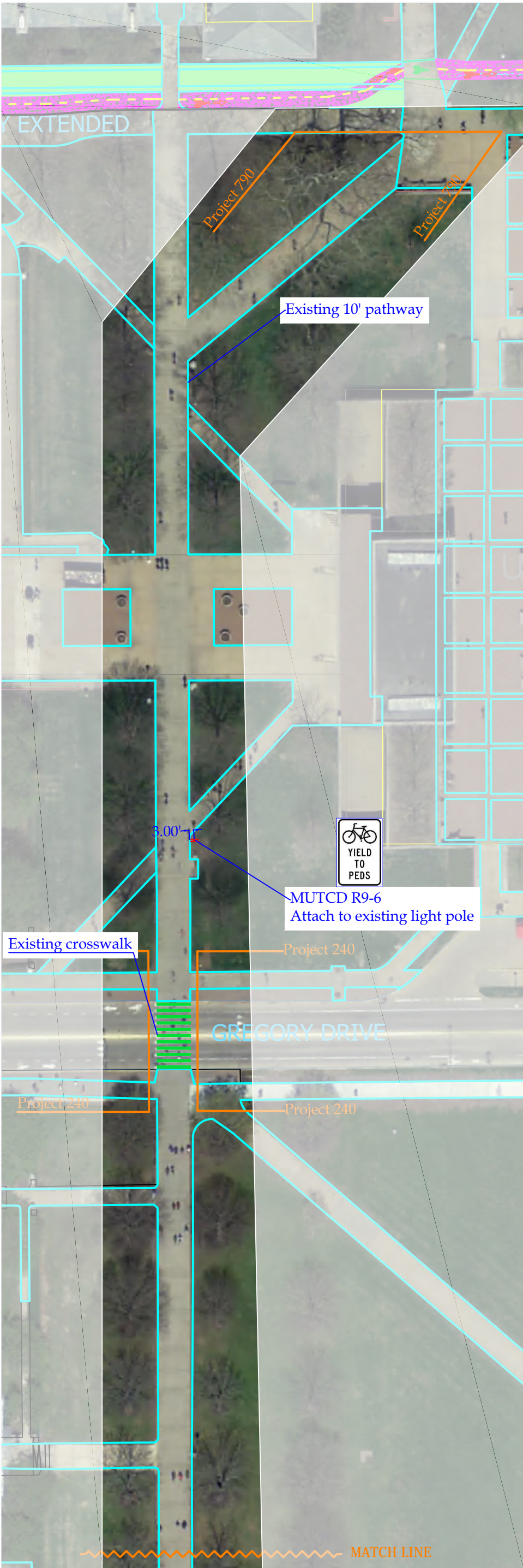
Project Number: 200

Drawing Number: 1/1

Description: Lincoln Bike Path from Wright to Mathews

PROPOSED CAMPUS BICYCLE NETWORK





Notes:
 MUTCD R9-6: One signpost with two signs (one facing north, one facing south).

- Legend:
- Existing sidewalks
 - Existing buildings
 - Crosswalks
 - Stoplines
 - New road edge
 - New lane lines (yellow)
 - New lane lines (white)
 - New sidewalks
 - Sign
 - Landscaped area

1" = 50'



PRODUCED BY AN AUTODESK EDUCATIONAL PRODUCT

PRODUCED BY AN AUTODESK EDUCATIONAL PRODUCT

Facilities & Services
ILLINOIS
 UNIVERSITY OF ILLINOIS AT URBANA-CHAMPAIGN

Drawing by: Holly Nelson
 Date: 4/13/2012
 Scale: 1" = 50'

Project Number: 790
 Drawing Number: 1/1
 Description: UGL Path from Armory to Loredo Taft

PROPOSED CAMPUS
 BICYCLE NETWORK